



EXCEPTIONAL ESTATE WITH RESORT-CALIBER GROUNDS
ATHERTON



ARCHITECTURE OF ENDURING QUALITY with East Coast influence defines this exceptional estate, privately positioned on approximately one acre with beautifully curated grounds and resort-caliber amenities. Built by William Young, Atherton Builders, the home reflects a level of craftsmanship and design that is both timeless and highly livable, with three levels connected by elevator and a floor plan that supports both grand entertaining and everyday living.

Refined interiors showcase extensive millwork, custom cabinetry, and extraordinary lighting – a defining element of the design. Formal living and dining rooms offer impressive scale, while a tremendous kitchen and family room create a natural gathering space for daily life. Five bedrooms in the main home include a luxurious primary suite with its own office, along with two additional offices providing exceptional flexibility for work-from-home needs. A fully equipped guest house offers ideal accommodations for extended stays. The lower level is designed for recreation and leisure, featuring lounge and game areas, a full bar, temperature-controlled wine cellar, cinema-quality theater, craft room, and a spacious fitness center.

Outdoor living mirrors a private resort with a pool and spa with waterslide tube, heated covered terrace, fire pit, barbecue center, and pickleball court, all surrounded by expansive lawns and mature gardens. The setting, scale, and overall execution are exceptional, just moments from top-rated Las Lomas schools, Stanford University, and the heart of Silicon Valley.















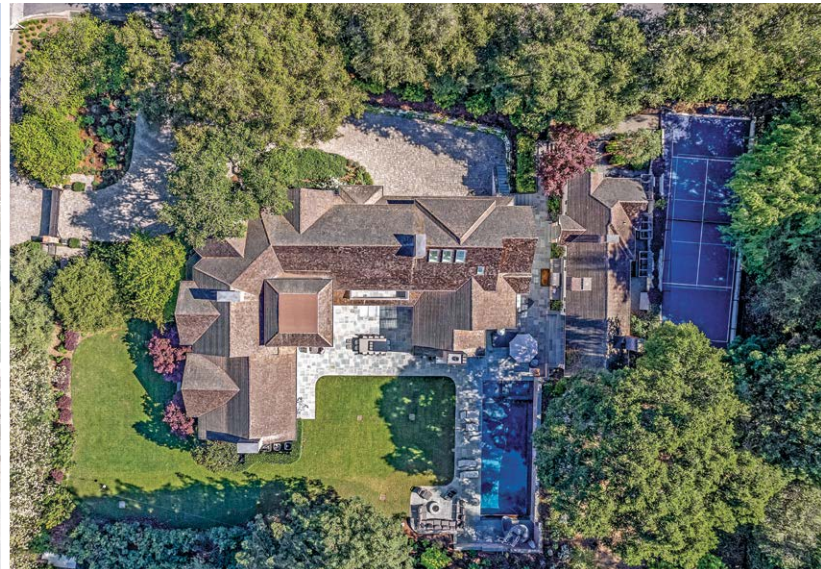
GUEST HOUSE



SUMMARY OF THE HOME

- East Coast-inspired estate property with exceptional craftsmanship and interior design
- Built in 2013 by William Young, Atherton Builders
- Approximately 1 acre (43,660 square feet)
- Three levels with elevator, 5 bedrooms, 3 offices, 4 full baths, and 4 half-baths
- Detached guest house with 1 bedroom, 1 bath, living room, full kitchen, and laundry
- Approximately 13,765 total square feet
 - Main residence: 11,655 sq. ft.
 - 4-car garage: 1,295 sq. ft.
 - Guest house: 815 sq. ft.
- Main level: foyer, office/library; office with half-bath, living room with fireplace, formal dining room, butler's pantry, kitchen, casual dining area, family room with fireplace, mud room with half-bath, powder room
- Upper level: primary bedroom suite with office, bedroom suite, bedroom suite, laundry room
- Lower level: lounge, bar, wine cellar, recreation room with fireplace, theater, fitness center, bath, bedroom, bedroom/project room, 5-car garage access, secondary laundry room, half-bath
- Pool, spa, and custom water slide tube; lighted pickleball court; heated covered terrace with fireplace; built-in barbecue center; fire pit terrace; rose garden; enclosed vegetable garden
- Professionally landscaped grounds with magnificent gardens and trees plus vast lawn
- Two electronically gated driveway entrances with abundant on-property and off-street parking
- Excellent Las Lomas schools

Price upon request | [EstateInAtherton.com](https://www.EstateInAtherton.com)



HUGH CORNISH & ASSOCIATES

Over \$3.8 Billion in Sales

#1 Coldwell Banker Agent, San Francisco Peninsula

#11 Coldwell Banker Agent, United States

#11 Agent in the United States, *RealTrends* 2025



HUGH CORNISH

650.619.6461

hcornish@cbnorcal.com

DRE# 00912143

hughcornish.com



CHRISTINA HENGEHOLD

415.722.6402

christina.hengehold@cbrealty.com

DRE# 02210414

christinahengehold.com