



RARE CORNER SETTING IN MORGAN LANE COMMUNITY

207 PEARL LANE



MENLO PARK



PRICE UPON REQUEST



This Craftsman-style home stands at a premier corner location in Morgan Lane, a community of 56 single-family homes built in 2008 by Taylor Morrison. Overlooking the tree-lined central park, the home enjoys a setting that feels open and connected to green space while offering the rare advantage of a large wraparound porch. Beautifully finished with lighting and detailed railings, this inviting outdoor area extends the living environment and sets the tone for the home's welcoming character.

The three-level design offers versatility with 4 bedrooms and 3.5 baths, thoughtfully arranged to accommodate a variety of lifestyle needs. The main level showcases an open concept anchored by a spacious living and dining area with fireplace and elevated counter seating that separates the area from the kitchen. Beautiful honed granite counters and to-the-ceiling tile backsplashes contrast with crisp white cabinetry and an array of quality stainless steel appliances, including a 6-burner gas range and built-in refrigerator. Sliding glass doors open to a private patio, ideal for a barbecue, which connects directly to the wraparound porch.

On the second level, with new carpet, the primary suite features all customized closets and a Carrara marble bath, while two additional bedrooms have direct access to a shared bath. The top floor provides a full loft-style suite with flexible use as an office, guest retreat, or media lounge. Currently customized with extensive cabinetry and a workstation, this space is the ideal work-from-home area and is complete with its own bath.

Adding to the home's appeal is its Linfield Oaks location with convenience to Burgess Park, downtown Palo Alto, Meta headquarters, and top Menlo Park schools.

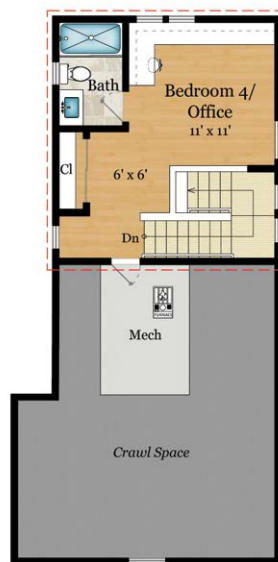




MAIN LEVEL
625 SQ FT



UPPER LEVEL 1
985 SQ FT



UPPER LEVEL 2
320 SQ FT





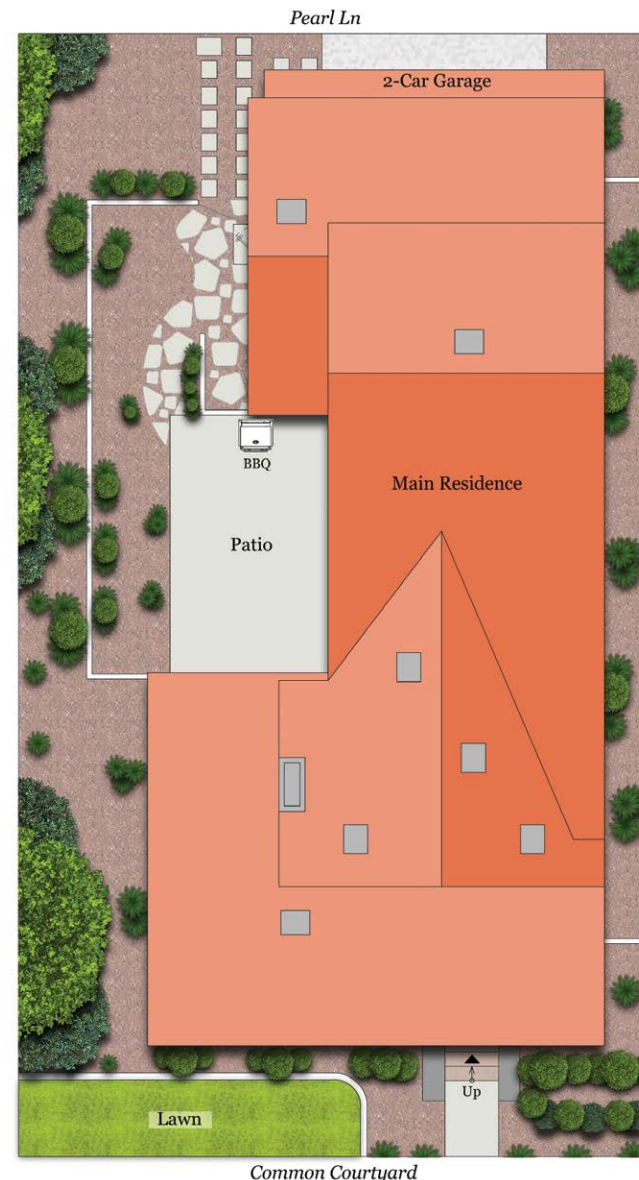
Community Grounds



SUMMARY OF THE HOME

- Craftsman-style single-family home in Morgan Lane, a community of 56 homes built by Taylor Morrison in 2008
- Rare corner location overlooking the central community park with playground
- Three levels with 4 bedrooms and 3.5 baths
- Approximately 1,840 square feet of living space
- Main rooms: wraparound front porch, foyer, living area with fireplace, open dining area, kitchen
- Personal accommodations: main-level powder room, second-floor primary suite, two second-floor bedrooms plus bath, third-floor bedroom suite
- Engineered wood floors on the main level and new carpet upstairs
- Lot size of approximately 2,664 square feet
- Linfield Oaks location minutes to Burgess Park, Meta headquarters, downtown Palo Alto, and Highway 101
- Excellent Menlo Park schools

Price upon request | 207PearlLane.com



**HUGH
CORNISH**
& ASSOCIATES

Over \$3.5 Billion in Sales

#1 Coldwell Banker Agent, San Francisco Peninsula

#7 Coldwell Banker Agent, United States

#111 Agent in the United States, *RealTrends* 2025



HUGH CORNISH

650.619.6461

hcornish@cbtnorcal.com

DRE# 00912143

hughcornish.com



CHRISTINA HENGHEOLD

415.722.6402

christina.hengehold@cbrealty.com

DRE# 02210414

hughcornish.com