



## CLASSIC ENGLISH TUDOR WITH RESORT-INSPIRED GROUNDS

130 TUSCALOOSA AVENUE | ATHERTON | PRICE UPON REQUEST

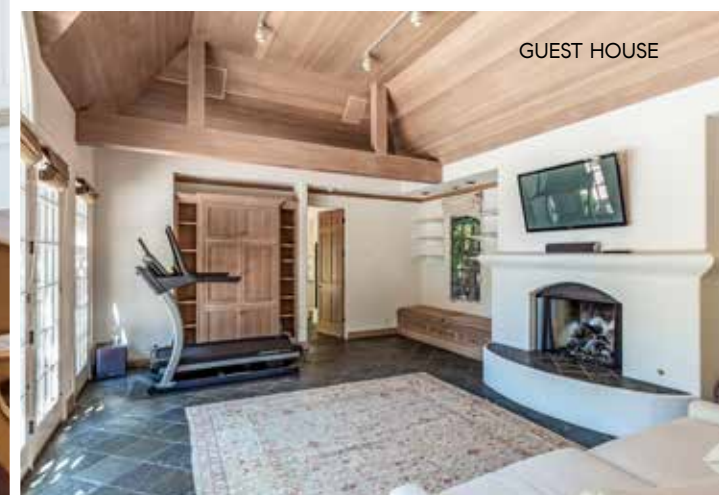


Welcome to this classic English Tudor manor with roots dating back to 1936, stylishly updated interiors, resort-inspired grounds, and a spacious guest house. Providing seclusion and privacy, a long driveway leads you to this captivating property introduced through columns topped with stone-carved pineapple finials – a signature of friendship and hospitality. Towering redwoods and a colorful rose garden enhance the setting while vast stretches of synthetic lawn wrap the entire home with thoughtful consideration for today's drought conditions.

The main residence is beautifully appointed with classic and timeless finishes that include hewn-finished hardwood floors on the main level, leaded glass accent windows, and refined millwork. Traditional formal venues are complemented by the kitchen and adjoining family room that are perfect for today's style of living. There is also a handsomely appointed library/office with outside entrance that is just right for today's work-from-home needs. Rounding out the main level is a spacious, bright and light bedroom suite with pool access. Upstairs, the home's three additional bedrooms include the primary suite, which spans one entire side of the home and features tremendous customized wardrobe space and an all-marble luxe bath. Adding to the accommodations is a large 1-bedroom, 1-bath guest house with full kitchen that doubles as a poolside entertainment venue.

The grounds are designed for quintessential California living complete with 8-hole putting green, large pool, separate spa, fireplace terrace with barbecue center, plus a second barbecue poolside. Located in the heart of desirable West Atherton, this home is minutes from the Menlo Circus Club, downtown Menlo Park, Stanford University, and Sand Hill Road venture capital centers.





## SUMMARY OF THE HOME

- Classic English Tudor manor in West Atherton
- 4 bedrooms, library/office, and 3.5 baths in the main residence
- 1-bedroom, 1-bath guest house with full kitchen and laundry
- Approximately 7,365 total square feet (per floor plan artist)
  - Main residence: 4,670 square feet
  - Guest house: 960 square feet
  - 3-car garage: 995 square feet
  - Unfinished space: 310 square feet
  - Sheds: 430 sq ft
- Public rooms: foyer; living room with gas fireplace; formal dining room; kitchen; breakfast area; family room with gas fireplace; library; laundry room; powder room
- Personal accommodations: main-level bedroom suite; upstairs primary suite; two upstairs bedrooms; upstairs bath
- Hewn-finished hardwood floors on the main level
- Pool, separate spa, 8-hole putting green, two barbecue kitchens, fireplace terrace, and raised-bed garden
- All drought-tolerant synthetic lawn with vast expanse for recreation
- Detached and newly finished 3-car garage with 400-bottle wine refrigerator, plus large motor court
- Approximately 0.9 acres (38,768 square feet)

Price upon request

130Tuscaloosa.com



**HUGH  
CORNISH**  
& ASSOCIATES

**HUGH CORNISH**

650.619.6461 | CalRE#00912143  
hcornish@cbtnorcal.com

[HughCornish.com](http://HughCornish.com)



**COLDWELL  
BANKER**  
REALTY

*S*

STEPHANIE ELKINS

**STEPHANIE ELKINS VAN LINGE**

650.400.2933 | CalRE#00897565  
stephanie.elkins@cbtnorcal.com

[ColdwellBankerHomes.com](http://ColdwellBankerHomes.com)

