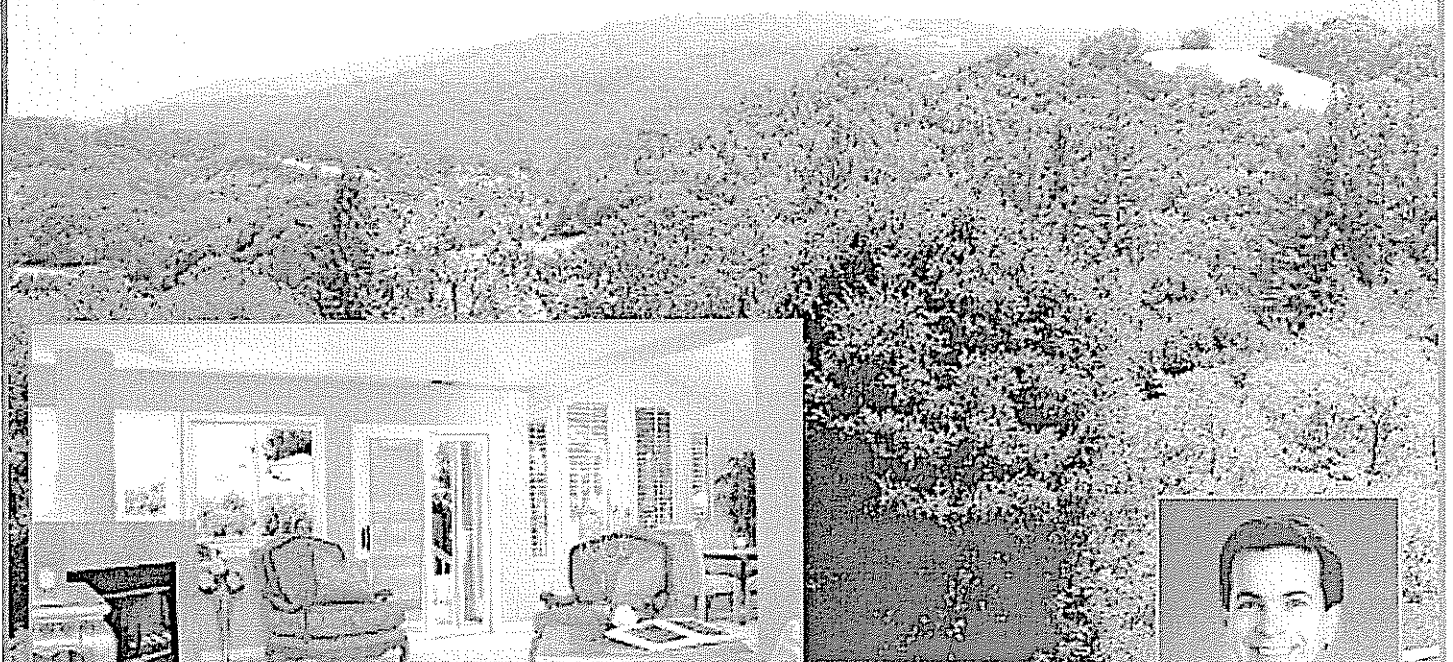


# SPECTACULAR COAST RANGE VIEWS



8 APPLEWOOD LANE  
PORTOLA VALLEY



presented by

## HUGH CORNISH



#1 Agent in Menlo Park –  
El Camino Office 2000, 2001,  
2002, 2003, & 2004

International President's Premier  
Top 1% of Coldwell Banker agents

**650-566-5353**

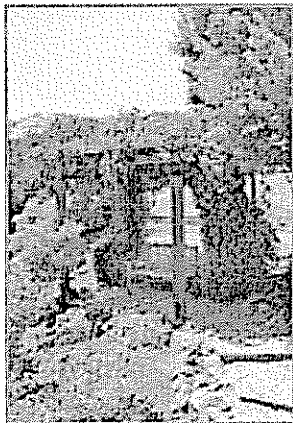
[hcornish@cbtnorcal.com](mailto:hcornish@cbtnorcal.com)

[www.hcornish.com](http://www.hcornish.com)



PUT HUGH'S EXPERIENCE TO WORK FOR YOU!

Information deemed reliable, but not guaranteed.



WELCOME to this lovely, two-story, Contemporary home where nearly every window frames spectacular views of the Coast Range. Surrounded by a fully-enclosed landscaped garden, the four-bedroom, three

and one half-bath house enjoys unusual privacy at the end of a sunny cul-de-sac. A spacious living room, dining room, family room, and kitchen, plus two bedrooms and two and one-half baths are located in the main level. A flight of stairs descends to the lower level, which is comprised of two guest bedrooms, a full bath, laundry room, and formal entry. Attached three-car garage. Excellent Portola Valley schools.

*Offered at \$2,245,000*

# *8 Applewood Lane*

## *Portola Valley*

*Welcome to this two-story, Contemporary home where nearly every window frames a dazzling view of the Coast Range. Surrounded by a fully-enclosed perennial garden, the four-bedroom, three and one half-bath house enjoys unusual privacy at the end of a sunny, landscaped cul de sac. A spacious living room, dining room, family room and eat-in kitchen, plus two bedrooms and two and one-half baths are located the main level. A flight of stairs descends to the lower level, which is comprised of two guest bedrooms, a full bath, laundry room and formal entry. Attached three-car garage. Portola Valley schools.*

### Summary of Features

- The setting is approximately 1.29 acres at the end of a landscaped cul de sac
- A flight of stairs ascends from the formal **entry** up to the main level
- The spacious **living room** enjoys a dazzling view of the Coast Range
- The adjoining **dining room** is expanded by a soaring cathedral ceiling
- The family room features a wood burning fireplace and a built-in wet bar
- The updated, eat-in **kitchen** has granite counter-tops and a breakfast area
- **Four bedrooms** include:
  - A **master-suite** with walk-in closet space, full **bath**, fireplace and deck
  - A **main level guest bedroom** with an a private full **bath**
  - Two lower level **additional bedrooms** with an adjoining full **bath**
- The lower level **laundry room** has hook-ups for a full-sized washer and dryer
- The sunny **wraparound deck** has steps that descend to a hillside rose garden
- An arbor and two mature trees shade the **rear deck** off the kitchen
- The paved drive leads to guest parking and an attached **three-car garage**
- Excellent **Portola Valley Schools**

## House

### **Entry**

- A door with glass panels opens from the covered front porch
- An flight of stairs with a wooden rail ascends from the **entry** up to the main level
- A chandelier crafted of wood, brass and glass is suspended from the ceiling
- In the open stairwell, windows on two sides rise two stories from the entry to the upper hall
- A guest coat closet provides extra hanging space
- Recessed spot lights and tile flooring

### **Living Room**

- On the main level, the spacious **living room** opens off the upper hall
- Placed in one corner, the gas-log fireplace has a marble hearth and surround
- A series of windows frames spectacular views of the Coast Range
- Wood-framed sliding glass doors open to the wraparound deck
- Recessed spot lights are set into the coffered ceiling
- Cream-colored wall-to-wall carpet

### **Dining Area**

- The formal **dining room** adjoins the living room
- Soaring windows are screened by Plantation shutters
- A glass door opens to the wraparound deck
- Two wall sconces provide flattering illumination
- A pocket door allows convenient access into the kitchen
- Subtle wallpaper lines the walls
- Recessed spot lights are set into the cathedral ceiling
- Cream-colored wall-to-wall carpet

### **Kitchen and Breakfast Area**

- The updated chef's **kitchen** is next to the dining room
- Finished wood cabinets are complemented by counters and backsplash of lustrous granite
- The double stainless steel sink enjoys a view of the rear garden through a two large, wood-framed windows

- Beneath an enormous skylight, the granite-topped peninsula incorporates a Modernmaid four-burner gas cook-top and grill
- Other appliances include two built-in General Electric ovens and a built-in KitchenAid dishwasher
- A large pantry closet provides generous storage
- Stereo speakers are built-in
- Recessed spot lights are set into the ceiling
- The **breakfast area** is defined by a graceful pendant lamp
- Wood-framed sliding glass doors open to the shady rear deck and garden
- A second door leads to the upper hall
- Beautiful, blonde Pergo flooring

### **Powder Room**

- The powder room is located near the top of the stairs off the upper hall
- The tiled-topped vanity has a single sink beneath a wall of mirror
- A tulip fixture lights the room
- The wood cabinet is painted with a graceful design of leafy branches
- A linen closet provides generous shelf storage
- Just outside the powder room are a guest coat closet and the door to the dumbwaiter
- Tile floor

### **Central Hallway**

- A carpeted **central hallway** leads past the family room to the master suite
- Overhead light
- Cream-colored wall-to-wall carpet

### **Family Room**

- The **family room** faces a spectacular view of the Coast Range
- Centered against one wall, the wood-burning fireplace has a marble surround and a gas starter
- A wet bar with a stainless steel sink set in a tile counter is built into one corner of the room
- A wine rack and glass-fronted cabinets are placed conveniently above
- A deep niche accommodates display shelves
- Wood-framed sliding glass doors open to the sunny deck

- Recessed spot lights are set into the coffered ceiling
- Cream-colored wall-to-wall carpet

### **Master Suite**

- The secluded **master bedroom** is located at the end of the hall
- The gas-log fireplace has a marble hearth and surround
- A deep niche accommodates display shelves
- Wood-framed sliding glass doors open to a sunny deck
- Glass doors and windows are screened by Plantation shutters
- A fitted, walk-in closet provides ample shelf storage and hanging space
- Recessed spot lights are set into the coffered ceiling
- Cream-colored wall-to-wall carpet
  
- The communicating **master bath** has twin sinks set into in a tile counter beneath a wall of mirror
- The stall shower is lined in matching tile trimmed with an incised tile frieze
- The oversized whirlpool tub is set into a tile deck
- The commode is enclosed in a separate room
- The wood-framed window is screened by a Plantation shutter
- A skylight overhead admits natural light
- Recessed spotlights and tile flooring

### **Main Level Guest Bedroom**

- The **main level guest bedroom** is found opposite the family room
- A fitted, double closet with a built-in bureau is concealed behind paneled, folding doors
- A wood-framed window overlooks the rear garden
- Overhead light and cream-colored wall-to-wall carpet
  
- The communicating **full bath** has a sink set into in a tile counter beneath a wall of mirror
- The shower-over-tub has a glass door and a tile surround
- A wood-framed window overlooks the rear garden
- Overhead light and tile flooring

### **Additional Lower Level Bedrooms**

- **Two additional bedrooms** are located on the lower level

- Each has a double closet with built-in shelves and mirrored doors
- Glass doors allow direct access to the rose garden and to stairs leading to the wraparound deck off the living room
- Overhead lights and cream-colored wall-to-wall carpet

### **Bath**

- The adjoining full **bath** is lined in tile wainscoting with a mosaic frieze
- The pedestal sink is topped by a decorative sconce
- The charming, old-fashioned, claw-footed tub has been fitted with a shower nozzle
- Recessed spotlight and tile flooring

### **Laundry Room**

- The **laundry room** is also found on the lower level
- The laundry room has hook-ups for full-sized washer and dryer
- Cupboards are built in above the washer and dryer hook-ups
- A soaking sink is built into one corner
- Deep floor-to-ceiling cupboards line the wall opposite
- An ironing board folds down
- The lower level door to the dumbwaiter opens from the laundry room
- Overhead light and tile flooring

### **Garage**

- The attached three-car **garage** is accessed via a short staircase off the formal entry
- The fully-finished garage has extensive built-in storage space
- Both garage doors are electronically operated
- Stereo speakers are built-in

### **Grounds**

- The setting is approximately 1.29 acres at the end of a landscaped cul de sac
- Several nicely-maintained, mature trees surround the house
- The perennial garden is completely enclosed
- Fragrant lavender borders the lush lawn
- Raised beds and a play area occupy the far end of the garden

- Beyond a fenced dog run, the natural hillside runs up to the property line at the top of the hill
- At the side of the house, tie and gravel steps lead up to a bench beneath a rustic arbor
- A colorful rose garden basks in the afternoon sun

### *Additional Features*

- Seventy-five gallon hot water heater
- Central air conditioning in all living areas
- Electrically retractable solar screens on the southern and western exposures of the house
- Stereo speakers in kitchen, rear deck and garage
- Cable television available and HDTV satellite reception
- Automatic sprinklers front and rear
- Large lighted storage area (approximately 300 square feet per owner) with a concrete floor beneath the house
- Sewer connection to sanitary district water
- Underground utilities along Applewood Lane
- Town trail access and protected open space at the top of the property
- Upper property and privacy protected by scenic easements
- Secluded landscaped cul de sac within walking distance of Corte Madera and Woodside Priory Schools
- Convenient to Alpine Road, Portola Road and village stores
- Spectacular **panoramic views** of the Coastal Hills
- Approximately **3200 square foot house** built in 1988
- Excellent Portola Valley schools

***Disclosure Package Available Upon Request***

*For further information please contact*

***Hugh D. Cornish***

*International President's Premier  
Coldwell Banker Residential Real Estate*

*Bus: (650) 324-4456 Fax: (650) 324-8934 VM: (650) 566-5353*

*Any statistics or prices while not guaranteed,  
have been secured from sources we believe to be reliable.*