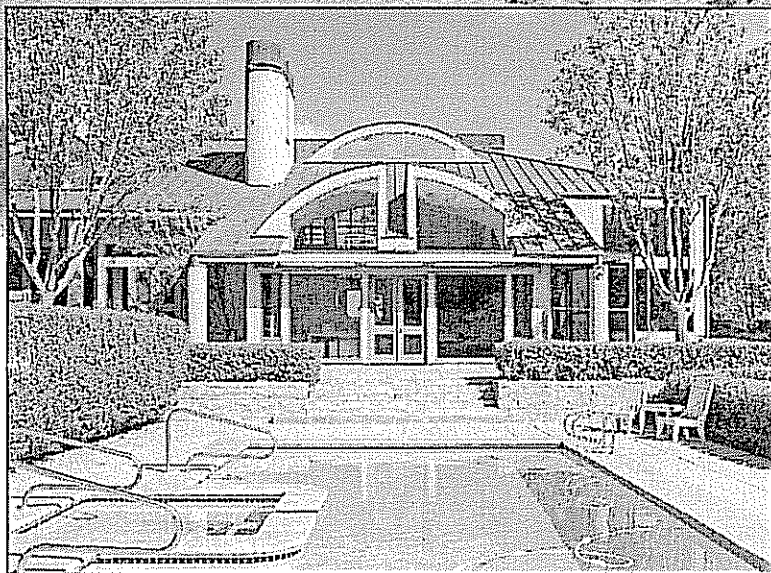


EXTRAORDINARY DESIGN

1015 MOUNTAIN HOME ROAD ■ WOODSIDE



presented by

HUGH CORNISH



#1 Agent in Menlo Park –
El Camino Office 2000, 2001,
2002, 2003, & 2004

International President's Premier
Top 1% of Coldwell Banker agents

650-566-5353

hcornish@cbnorcal.com

www.hcornish.com

WELCOME to this extraordinary contemporary home, designed by award-winning architects Fisher Friedman Associates of San Francisco. Throughout the living areas, dramatic ceilings create huge volumes of interior space, and soaring windows frame the breathtaking panorama. Glass doors open from nearly every downstairs room to the terraces that ring the house. Dual baths and two enormous walk-in closets enhance the comfort of the master suite. There is a downstairs guest suite, plus two upstairs bedrooms, as well as an additional full bath. The detached four-car garage features a large storage room with a workbench, and a loft above. Below the house, a swimming pool and spa complete the amenities of this magnificent property.

- Four bedrooms and four and one-half baths
- Living room, dining room, library, family room
- Kitchen and separate breakfast room
- Four-car detached garage with storage room and loft
- Highest quality materials and design throughout

Offered at \$6,495,000



Information deemed reliable, but not guaranteed.

1015 Mountain Home Road

Woodside

Welcome to this extraordinary contemporary home, designed by award-winning architects Fisher Friedman Associates of San Francisco. Throughout the living areas, dramatic ceilings create huge volumes of interior space, and soaring windows frame the breathtaking panorama. Glass doors open from nearly every downstairs room to the terraces that ring the house. Dual baths and two enormous walk-in closets enhance the comfort of the master suite. There are a downstairs guest suite, plus two upstairs bedrooms, as well as an additional full bath. The detached four-car garage features a large storage room with a workbench, and a loft above. Below the house, a swimming pool and spa complete the amenities of this magnificent property.

Summary of Features

- A paved **courtyard** forms the approach to the house
- A two-story solarium with curved glass extends upward from the **foyer**
- The step-down **living room** is defined by a pair of windows framing the view
- The formal **dining room** has a black granite buffet shelf built into one corner
- The superb **kitchen** has been recently updated with top-of-the-line appliances
- The sunny **breakfast room** is located between the kitchen and the family room
- The **family room** features a walk-in wet bar topped by a black granite counter
- Handsome two-story **library** with limestone fireplace and rolling library ladder
- **Four bedrooms and four and one-half baths** include:
 - A downstairs **guest bedroom** with a private **full bath** lined in fossil marble
 - A **master suite** with a fireplace, **dual baths**, and two fitted walk-in closets
 - A spacious upstairs **bedroom suite** with a gallery and nearby **full bath**
 - A second upstairs **bedroom** with a balcony overlooking a view of the hills
 - An elegant guest **powder room** located just off the foyer
- The **laundry room** is located across the hall from the kitchen
- The detached **four-car garage** features a large storage room and a loft above
- Below the house, the swimming **pool and spa** are set into an aggregate deck
- Breathtaking **panoramic views** of the Coastal Hills
- Approximately **7800 square foot main house** and **2071 square foot garage**
- Approximately **3.01 acres**, beautifully landscaped by Guzzardo and Associates
- Excellent **Portola Valley schools**

Approach

- The asphalt drive winds from the front gate, up a gentle slope past the swimming pool, and around the house, with its striking copper roof
- A courtyard, placed between the garage and the main house forms the approach to the entrance
- A garden enclosure shields the interior of the house from the courtyard
- Slate steps lead from the courtyard down to the massive glass entry doors

Downstairs

Foyer

- A two-story solarium with curved glass extends upward from the **foyer**
- Directly ahead, wide semi-circular steps descend to the living room
- To the right, is the wing containing the library, guest suite and master suite
- To the left are the dining room and a hall leading to the family room
- A guest coat closet is concealed behind a series of folding doors
- Rough-sawn cedar walls add texture to the sleek interior
- Recessed spotlights and natural blonde, white oak floor

Living Room

- The step-down **living room** is defined by a pair of soaring windows, which frame the breathtaking view of the Coastal Hills
- A “smokestack” pillar emphasizes the huge volume of space created by the dramatic ceiling
- Indented in a shallow niche, the wood-burning fireplace has a creamy polished-limestone hearth with a limestone surround and a gas starter
- A stereo cabinet is built into the wall next to the fireplace
- The mirrored wet bar with a black granite counter is concealed behind a pair of folding doors
- A pair of glass doors is set into a wall of window and opens to the front terrace
- Two steps down, the music alcove is brightened by windows on two sides
- Honey-colored wood cabinetry adds interest to the understated interior
- Recessed spotlights, track lighting and natural blonde, white oak floor

Dining Room

- The formal **dining room** floats a quarter level above the living room

- A pair of glass doors is set into a wall of window and opens to the side terrace
- Screens on the doors allow fresh air to circulate
- A black granite buffet shelf is built into one corner
- A wide bench occupies the space next to the steps down to the foyer
- A swing door allows convenient kitchen access
- Recessed spotlights, track lighting and natural blonde, white oak floor

Kitchen

- The superb **kitchen** is lined in streamlined, European-style Siematic laminated cabinetry
- Cabinets and drawers are beautifully detailed, and fitted with small-appliance garages, pull-out china shelves, utensil dividers, knife and spice racks, and storage bins
- Counters and enormous center island are topped with black granite
- A pass-through to the breakfast room is next to the cook top
- The Thermador gas cook top has a stainless steel hood and backsplash
- Additional state-of-the-art appliances include a Thermador Char-Glo barbecue grill, two built-in Gaggenau ovens, a SubZero side-by-side refrigerator/freezer and a General Electric dishwasher
- A solarium with curved glass extends upward above the double stainless steel dish sink
- The center island has a stainless steel prep sink and a breakfast bar
- Above, a skylight admits natural light
- Recessed spotlights, track lighting and festive calico slate floor

Breakfast Room

- The sunny **breakfast room** is located between the kitchen and family room
- A housekeeping desk has European-style laminated drawers and a black granite counter to match those in the kitchen
- A pair of glass doors is set into a wall of window and opens to the side terrace
- Screens on the doors allow fresh air to circulate
- A transom window above the door is also screened
- Two windows, set high on the walls, admit additional light
- Track lighting and festive calico slate floor

Family Room

- The expansive **family room** offers every opportunity for relaxation and comfort
- A walk-in bar has black granite counters front and rear with laminated, European-style cupboards underneath
- A small stainless steel sink is set into the rear counter
- A pair of glass doors opens to the side terrace
- Screens on the doors allow fresh air to circulate
- A transom window above the door is also screened
- A second pair of glass doors opens to the courtyard, convenient to the garage
- Concealing a storage closet, floor to ceiling folding doors stretch the length of one wall
- Recessed spotlights, track lighting and natural blonde, white oak floor

Library

- The handsome, two-story **library** is situated to the right of the foyer
- Double doors reveal a stylish sanctuary
- Indented in a shallow niche, the wood-burning fireplace has a creamy polished-limestone hearth with a limestone surround and a gas starter
- Honey-colored wood bookshelves are accessed by a rolling library ladder
- Additional bookshelves are built into the walls of a gallery on the upper floor, which is banded by a tubular ship's railing
- A motorized screen, for viewing slides and movies, retracts when not in use
- A pair of glass doors is set into a wall of window and opens to the front terrace
- Screens on the doors allow fresh air to circulate
- A transom window above the door is also screened
- A strong room fitted with shelves and bins provides locked storage
- Recessed spotlights, track lighting and natural blonde, white oak floor

Guest Suite

- A small anteroom opens into the **guest suite**
- A clothes closet is concealed behind a pair of folding doors
- The private **full bath** has a fossil marble floor and a marble-lined stall shower
- The sink is set into a fossil marble counter beneath a wall of mirror
- Honey-colored wood cabinetry adds richness to the understated interior
- In the **bedroom**, a wall of window frames the view of the Coastal Hills

- A pair of glass doors opens to the front terrace
- Screens on the doors allow fresh air to circulate
- A transom window above the door is also screened
- Track lighting and cream-colored wall-to-wall carpet

Master Suite

- The luxurious **master suite** is sequestered behind a pair of massive double doors
- A small anteroom opens into the spacious **bedroom**
- A wall of window frames the view of the Coastal Hills
- A pair of glass doors opens to the front terrace
- Screens on the doors allow fresh air to circulate
- A transom window above the door is also screened
- Another pair of glass doors opens into a secret garden enclosure
- Track lighting and natural blonde, white oak floor

Walk-in Closet and Master Bath #1

- To the right of the anteroom, a door leads to an enormous **walk-in closet**
- The closet is fitted with built-in drawers, shoe racks, a cupboard and hanging space
- A greenhouse window above the shoe racks admits natural light
- Recessed spotlights, honey-colored wood cabinetry and blonde, white oak floor
- At the far end of the closet, a second door opens to the **first** of two sumptuous **master baths**
- Windows frame an whirlpool tub encased in a marble deck
- A porcelain sink is set into a fossil marble counter beneath a wall of mirror
- A greenhouse window above the mirror admits natural light
- A kneehole vanity is topped by a fossil marble counter and faces a lighted mirror
- A roomy linen closet provides generous shelf storage
- The commode is enclosed in a separate compartment
- Recessed spotlights and honey-colored wood cabinetry
- The fossil marble floor is banded by a contrasting black marble border stripe

Walk-in Closet and Master Bath #2

- The second **walk-in closet** is entered through the bedroom

- The closet fitted with built-in adjustable shelves, a graduated tie rack, and abundant hanging space
- A pull-down stairway allows access to attic storage
- Recessed spotlights, honey-colored wood cabinetry and blonde, white oak floor
- Nearby is the doorway to the **second master bath**
- Just inside the door, a roomy linen closet provides generous shelf storage
- Opposite are a bank of built-in drawers and cupboards
- The sink is set into a fossil marble counter beneath a wall of mirror
- The oversized stall shower is lined in matching marble
- Windows frame an two-man Kohler whirlpool tub encased in a marble deck
- Above, a skylight admits natural light
- The commode is enclosed in a separate compartment
- Track lighting and honey-colored wood cabinetry
- The fossil marble floor is banded by a contrasting black marble border stripe

Guest Powder Room

- The elegant **guest powder room** is located just off the foyer
- The burnished sink is set into a black granite counter under a wall of mirror
- Sleek laminated cabinetry adds texture to the understated interior
- A skylight above the commode admits natural light
- Recessed spotlight, track lighting and natural blonde, white oak floor

Laundry Room

- The **laundry room** is located across the hall from the kitchen
- Honey-colored wood cabinetry is topped with white tile counters
- The closet provides hanging space for coats
- A computer desk is built in
- There are hook-ups for full-sized washer and dryer
- An ironing board folds down from one wall
- The deep sink, for soaking or flower arranging, is set into a long tile counter
- Above, greenhouse windows admit natural light
- A Dutch door opens to the courtyard, convenient to the garage
- Opposite, a smaller room with a tile counter allows access to the furnace closet
- Recessed spotlights and white tile floor

Stairs and Gangway

- A flight of natural blonde, white oak stairs is suspended above the living room

- A two-story solarium with curved glass extends upward from the foyer
- Above the foyer, a gangway forms a bridge to the second floor library gallery and one of two upstairs bedrooms
- Stairs, overlook near library gallery and gangway are all banded by a tubular ship's railing
- Opposite an eyebrow window admits additional natural light
- Rough-sawn cedar walls add texture to the sleek interior
- Recessed spotlights and natural blonde, white oak floor

Upstairs Bedroom Suite

- **Upstairs bedroom suite** occupies its own wing
- Along the hall to the suite is a window overlooking the kitchen
- Just inside the door to the **bedroom**, two walk-in closets face each other
- A glass door opens to a small private balcony
- Opposite, a window overlooks the courtyard
- A small skylight admits additional natural light
- Track lighting and cream-colored wall-to-wall carpet
- Double doors reveal an open **gallery** overlooking the family room below
- The gallery has two windows and a storage room
- Track lighting and cream-colored wall-to-wall carpet

Bath

- The **full bath** is located at the top of the stairs
- The sink is set into a fossil marble counter beneath a wall of mirror
- Honey-colored wood cabinetry adds richness to the understated interior
- There are both a tub and a marble-lined stall shower
- The commode is enclosed in a separate compartment
- Track lighting and fossil marble floor
- Near the bath, two roomy linen closets provides generous shelf storage

Second Upstairs Bedroom

- The **second upstairs bedroom** is situated on the far side of the gangway
- A clothes closet is concealed behind a pair of folding doors
- An irregular, arched window frames the view of the Coastal Hills
- A pair of glass doors opens to the private balcony
- Screens on the doors allow fresh air to circulate

- Track-lighting and cream-colored wall-to-wall carpet

Exterior

Garage

- The four-car detached **garage** features a huge storage room with a sink and shelves
- The loft above is accessed by a flight of stairs
- Both garage doors are automatically operated
- A side door leads to the courtyard

Patio, Pool and Spa

- A series of terraces leads from the house down to the **patio, pool and spa**
- An aggregate patio surrounds the rectangular swimming pool
- The attached spa is rimmed in decorative tile
- A charming dressing pavilion is located beside the pool at the far end of the patio
- A steel arbor echoes the arch of the living room windows
- A flight of steps descends to a sunken lawn encircled by a tall hedge

Additional Features

- Two re-circulating hot water heaters
- Three central forced-air heating zones, two downstairs and one up
- Two air-to-air heating systems, one for the family room and one for guest suite
- ADT security alarm system
- Nutone intercom
- Immaculately-maintained lawn and gardens sheltered by mature oaks and pines
- Fenced perimeter with automatic security gate
- Automatic sprinklers front and rear
- Breathtaking **panoramic views** of the Coastal Hills
- Approximately **7800 square foot main house** designed by award-winning architects Fisher Friedman of San Francisco
- Approximately **1452 square foot garage, plus a 619 square foot loft**
- Approximately **3.01 acres**, beautifully landscaped by Guzzardo and Associates of San Francisco
- Excellent Portola Valley schools

NOTE: The property being sold is not new and neither Seller nor Seller's agent warrant the condition of the property, which shall be sold in its present "As Is" condition. Potential buyers are advised to carefully inspect the property personally, and to obtain inspection reports from qualified experts regarding all systems and features of the property including boundary lines, lot and dwelling size, roof, plumbing, electrical appliances, sewers, septic system, soil conditions, foundation, heating, air conditioning, structural components, pool and related equipment, and any possible environmental hazards or pest infestation or infection. The property was received by Seller as a gift. Seller has not resided at the property, may not have performed any inspections, and makes no representation regarding its condition. Seller agrees to permit potential buyers and their representatives reasonable access to the property to complete the inspections. At the time of contract, the buyer will be required to execute an "As Is" Addendum.

Disclosure Package Available Upon Request

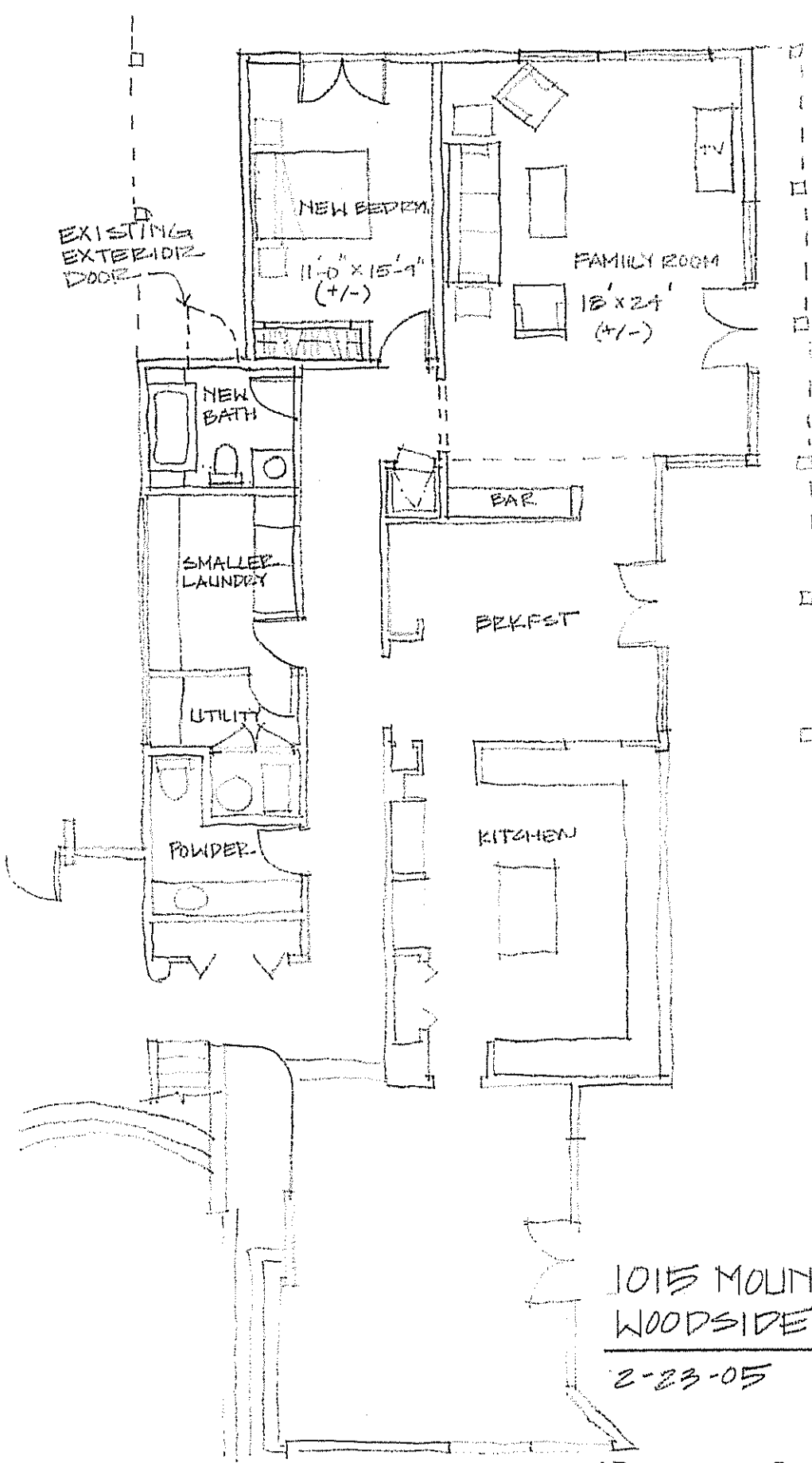
For Further Information Please Contact

Hugh D. Cornish
International President's Premier
Coldwell Banker Residential Real Estate

Bus: (650) 324-4456 Fax: (650) 324-8934 VM: (650) 566-5353

*Any statistics or prices while not guaranteed,
have been secured from sources we believe to be reliable*

Architect's Rendering of Possible 5th Bedroom



1015 MOUNTAIN HOME RD.
WOODSIDE

2-23-05

**Buyer to confirm with Town of Woodside.*