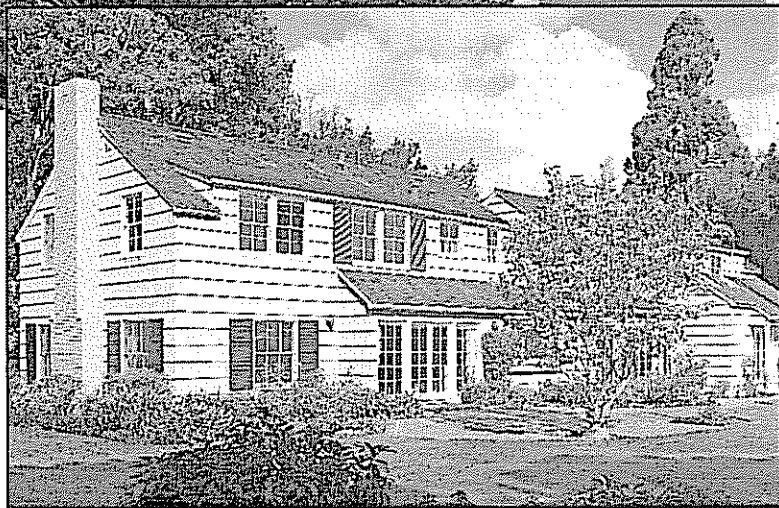
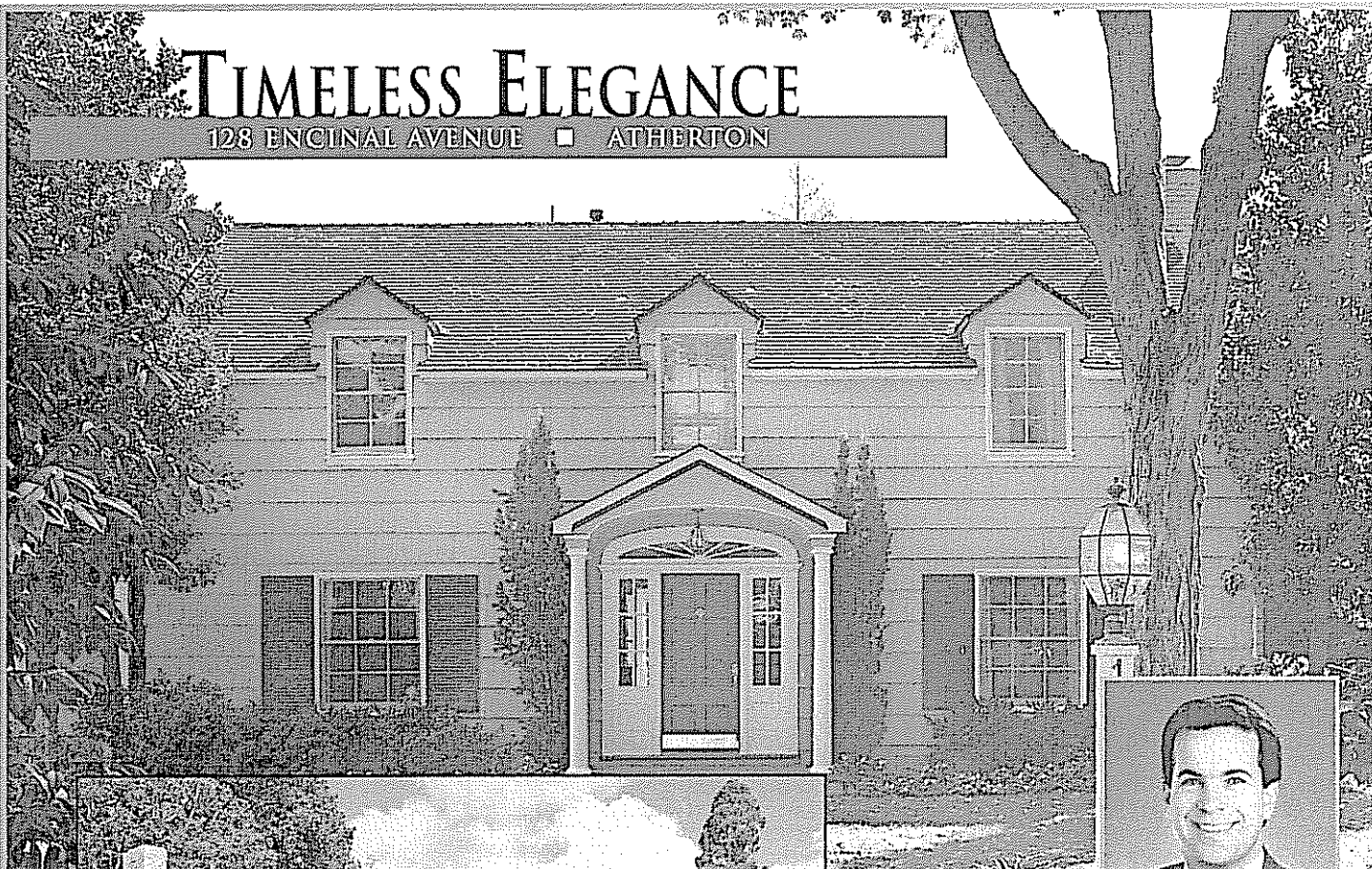


TIMELESS ELEGANCE

128 ENCINAL AVENUE ■ ATHERTON



presented by

HUGH CORNISH



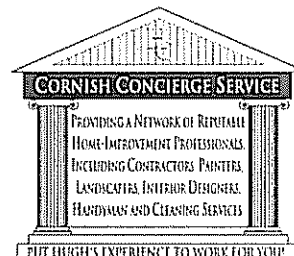
#1 Agent in Menlo Park –
El Camino Office 2000, 2001, 2002,
2003 & 2004*

International President's Premier
Top 1% of Coldwell Banker agents

650-566-5353

hcornish@cbtnorcal.com

www.hcornish.com



Welcome to this timeless, two-story, traditional home on one of Atherton's prettiest streets. Lofty ceilings, hardwood floors and sparkling windows create an atmosphere of refined luxury, perfect for entertaining in the grand manner. The five-bedroom, four-bath house has been gently renovated, with a spectacular, fully remodeled chef's kitchen, comfortable family room and a sumptuous master suite. In the rear garden, lush lawn and a wealth of roses surround a studio guest house, swimming pool, and sport court. Three-car garage. Excellent Menlo Park schools.

Offered at \$3,249,000

Information deemed reliable, but not guaranteed.

* year to date

128 Encinal Avenue

Atherton

Welcome to this timeless, two-story, Traditional home on one of Atherton's prettiest streets. Lofty ceilings, hardwood floors and sparkling windows create an atmosphere of refined luxury, perfect for entertaining in the grand manner. The five-bedroom, four-bath house has been gently renovated, with a spectacular, fully remodeled chef's kitchen, comfortable family room and a sumptuous master suite. In the rear garden, lush lawn and a wealth of roses surround a studio guest house, swimming pool and sport court. Three car garage. Excellent Menlo Park schools.

Summary of Features

- The **entry hall** showcases the graceful stairway
- Sparkling windows in the **living room** frame three-sided views of the lush lawn
- French doors open from the adjoining **sun room** to the rear patio, pool and garden
- The formal **dining room** features an antique, beaded crystal chandelier
- The chef's **kitchen** is lined in honey-colored cherry cabinets with granite counters
- The **family room** has an informal eating area, built-in media cabinet and fireplace
- **Five bedrooms and four baths** include:
 - A sumptuous **master-suite** with a fireplace, marble bath and walk-in closet
 - **Two** additional upstairs **bedrooms and two full baths**
 - A **fourth upstairs bedroom** currently used as a **home office**
 - A downstairs **bedroom with full bath** and private entrance
- A **mud room** with a laundry closet and flower sink is located off the family room
- The gazebo-style **studio guest house** has a kitchen and a full bath
- The resurfaced, rectangular **swimming pool** is set into a brick-trimmed deck
- A wisteria-draped pergola screens the **sport court**
- A wealth of **colorful roses** surrounds the house bordering the rear patio
- **Walkways and patios**, front and rear are paved with brick-trimmed aggregate
- The **asphalt driveway** is gated for safety
- Detached **three-car garage** is equipped with a 500 bottle wine refrigerator
- Stately **perimeter trees**, lush lawn and evergreen shrubs ensure peace and privacy
- High ceilings, **hardwood floors**, sash windows, French doors, crown moldings
- Convenient to **shopping and recreation**
- Walk to excellent **Menlo Park schools**

First Story

Entry Hall

- The paneled front door is topped by a leaded glass fanlight
- The **entry hall** showcases a graceful stairway with oak treads and spindle banisters
- To the right is the living room and to the left, the dining room
- Straight ahead, a glass door leads to the sunroom
- The ceiling is enhanced by a bronze chandelier
- Recessed spotlights provide additional illumination
- The sound system is easily operated from the hall closet
- Crown moldings, door and window moldings, and deep baseboards
- Oak hardwood floor

Living Room

- The superbly proportioned **living room** is perfect for entertaining
- The fireplace has a cream marble hearth and surround and a lovely paneled mantelpiece
- Built-in display shelves, with cupboards below, flank a cozy window seat
- Recessed perimeter spotlights provide additional illumination
- Sparkling, double-hung sash windows frame views of the lush lawn
- Crown moldings, door and window moldings, and deep baseboards
- Oak hardwood floor

Dining Room

- The formal **dining room** adjoins the entry hall and can be closed off by French doors
- Sparkling, double-hung sash windows overlook the front garden
- A pocket door allows convenient access to the kitchen
- The ceiling is enhanced by an antique, beaded crystal chandelier with matching crystal sconces
- Recessed pin spotlights provide additional illumination
- Stereo speakers are set into the ceiling
- Crown moldings, door and window moldings, and deep baseboards
- Elegant chair rail and oak hardwood floor

Sunroom

- The **sunroom** overlooks the rear patio through a wall of windows
- French doors allow direct access to the patio and garden
- A wide doorway is open to the living room

- The guest coat closet is tucked away under the stairs
- Recessed perimeter spotlights provide illumination
- Crown moldings, door and window moldings, and deep baseboards
- Oak hardwood floor

Kitchen

- The spectacular, fully remodeled chef's **kitchen** is conveniently located between the dining room and the family room
- Banks of honey-colored, cherry cabinets are topped by gray granite counters with an expanse of honed limestone backsplash
- Glass-fronted cabinets are equipped with display lighting
- Floor-to-ceiling cupboards provide excellent pantry storage
- The stainless steel double sink has a view of the rear garden
- Stacked Thermador ovens, one a microwave and one a convection oven, are built-in
- The professional-grade, four-burner Thermador cook-top has a brushed stainless steel hood and a grill
- Other appliances include an brushed stainless steel SubZero refrigerator, a Thermador warming oven, Miele dishwasher and a U-line wine captain
- The breakfast bar seats four people in comfort
- Twin pocket doors open to the family room
- Recessed spotlights and extensive under-counter lighting provide illumination
- Stereo speakers are set into the wall
- Crown moldings, door and window moldings, and deep baseboards
- Oak hardwood floor

Family Room

- The **family room** incorporates an informal dining area nestled in a window-lined bay
- A brass, Dutch-style chandelier defines the space
- A second bay of windows overlooks the front garden
- The wood burning and gas fireplace has a cream marble hearth and surround
- On either side of the fireplace are a built-in shelves and cabinets, including space for an oversized television
- French doors allow access to patio, pool and rear garden
- Recessed pin spotlights provide illumination
- Crown moldings, door and window moldings, and deep baseboards
- Oak hardwood floor

Downstairs Bedroom

- The **downstairs bedroom** is located through a small anteroom off the family room
- A fitted double closet provides hanging and shelf space
- Double-hung sash windows overlook the front and side gardens
- Overhead lighting fixture
- Crown moldings, door and window moldings, and deep baseboards
- Oak hardwood floor
- The nearby **full bath** features a tile-lined stall shower with a glass enclosure
- The single sink is set into a tile counter
- Decorative tiles provide a colorful accent
- Brass fixtures and tile floor

Mud Room

- The **mud room** is located through a pocket door, beyond the anteroom
- French doors allow access to the rear garden and detached garage
- A flower arranging sink is set into a long counter
- Cupboards above and below provide excellent storage
- The laundry closet is located at the opposite end of the room
- There are hook-ups for full-sized washer and dryer
- Overhead lighting fixture and oak hardwood floor

Second Story

Stairway and Upstairs Hall

- The graceful **stairway** has oak treads and spindle banisters
- In the upstairs hall, two windows overlook the rear garden
- A linen closet provides extra shelf storage
- Overhead lighting fixtures
- Crown moldings, door and window moldings, and deep baseboards
- Oak hardwood floor

Upstairs Bedroom #2

- **Upstairs bedroom #2** is located at the front of the house in the corner
- A dormer window overlooks the front garden
- A second window frames a view of the side garden
- The room is cooled by an old-fashioned revolving ceiling fan
- The clothes cupboard offers hanging and shelf space
- Crown moldings, door and window moldings, and deep baseboards

- Oak hardwood floor

Upstairs Bath #1

- This **full bath** is placed next to bedroom #2 at the front of the house
- A single sink is set into a Corian counter beneath a wall of mirror
- The shower-over-tub is set into an alcove and is encased in clear glass
- A dormer window screened by shutters overlooks the front garden
- Decorative truffle tile floor

Upstairs Bedroom #3

- **Bedroom #3** is situated down the hall next to the master suite
- Two windows overlook the front garden
- The room is cooled by an old-fashioned revolving ceiling fan
- A double closet provides hanging and shelf space
- Crown moldings, door and window moldings, and deep baseboards
- Chair rail and oak hardwood floor

Upstairs Bath #2

- Opposite upstairs bedroom #3 is a second **full bath**
- Two sinks are set into a limestone counter beneath twin mirrored medicine cabinets
- The deep whirlpool tub is set into a navy and cream tile deck
- Decorative tiles provide a colorful accent
- The commode is encased in a separate room
- Built-in cupboards offer extra shelf storage
- Fluted sconces are set between windows overlooking the rear garden
- Tile floor inset with contrasting medallions

Upstairs Bedroom #4

- **Bedroom #4** is located at the top of the stairway to the right of the landing
- This room is currently being used as a home office
- Two windows overlook the rear garden
- The single closet offers hanging space
- Crown moldings, door and window moldings, and deep baseboards
- Oak hardwood floor

Master Suite

- The lavish **master suite** is comprised of a bedroom, a luxurious master bath and a fitted walk-in closet

- The steeply-sloped ceiling lends drama to the **bedroom**
- Tucked into one corner, the wood burning and gas log fireplace has a white marble hearth and surround
- Two dormer windows overlook the front garden
- Three sunny windows overlook the rear garden
- The ceiling is enhanced by a crystal overhead lighting fixture
- Recessed pin spotlights provide additional illumination
- Crown moldings, door and window moldings, and deep baseboards
- Oak hardwood floor
- The gorgeous, remodeled **master-bath** allies luxury with function
- The counters, and tub deck are all fashioned of creamy marble
- Two sinks are set into a marble counter beneath twin, mirrored, built-in medicine cabinets
- Beneath, drawers and cabinets provide abundant storage space
- The oversized Kohler whirlpool tub is set into a marble deck framed by a wide window
- The stall shower has three nozzles and limestone walls
- The commode is encased in a separate room
- A built-in cupboard offers extra shelf storage
- Tasteful crystal sconces are set between windows overlooking the rear garden
- Recessed spotlighting and limestone tile floors
- Adjoining the master bath, the **walk-in closet** is fitted with racks, shelves and a built-in bureau
- A small window overlooks the front garden
- Recessed spotlights and oak hardwood floor

Garage

- The detached three-car **garage** has a fully-finished interior
- The walls are lined with extra storage and built-in work bench
- A pull-down stair allows attic access
- The doors are automatically operated
- The paved asphalt drive provides ample guest parking and is gated for safety

Garden

- The **garden** is fully fenced, front and rear
- The grounds are completely encircled by an Invisible electric fence
- The gazebo-style **studio guest house** has a kitchen and a full bath
- The rectangular **swimming pool** is set into a brick-trimmed aggregate deck

- A wisteria-draped pergola screens the **sport court**
- A brick **fire pit** is located next to the guest house
- A wealth of **colorful roses** surrounds the house bordering the rear patio
- **Walkways and patios**, front and rear are paved with brick-trimmed aggregate
- Stately **perimeter trees**, lush lawn and evergreen shrubs ensure peace and privacy

Additional Features

- The living room, dining room and kitchen are wired for a stereo system
- The family room has satellite reception and cable television
- Cable television in kitchen, three upstairs bedrooms, and master bath
- Cat5 wiring in all bedrooms and sunroom
- High ceilings, oak hardwood floors, sash windows, French doors and crown moldings throughout
- Beautiful, mature grounds with a variety of specimen plantings
- Convenient to shopping and recreation
- Walk to excellent Menlo Park schools

Disclosure Package Available Upon Request

Hugh D. Cornish

*International President's Premier
Coldwell Banker Residential Real Estate*

Bus: (650) 324-4456 Fax: (650) 323-7128 VM: (650) 566-5353

*Any statistics or prices while not guaranteed,
have been secured from sources we believe to be reliable.*