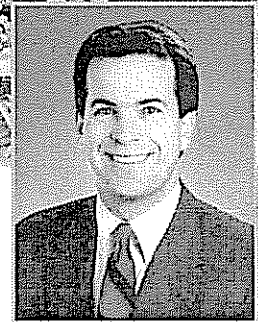
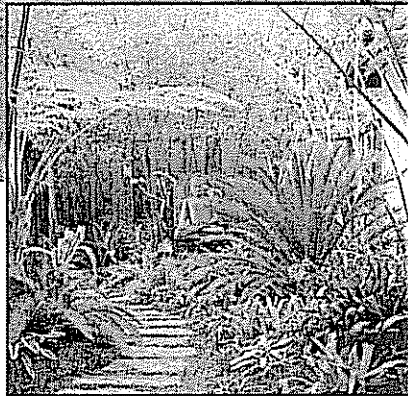
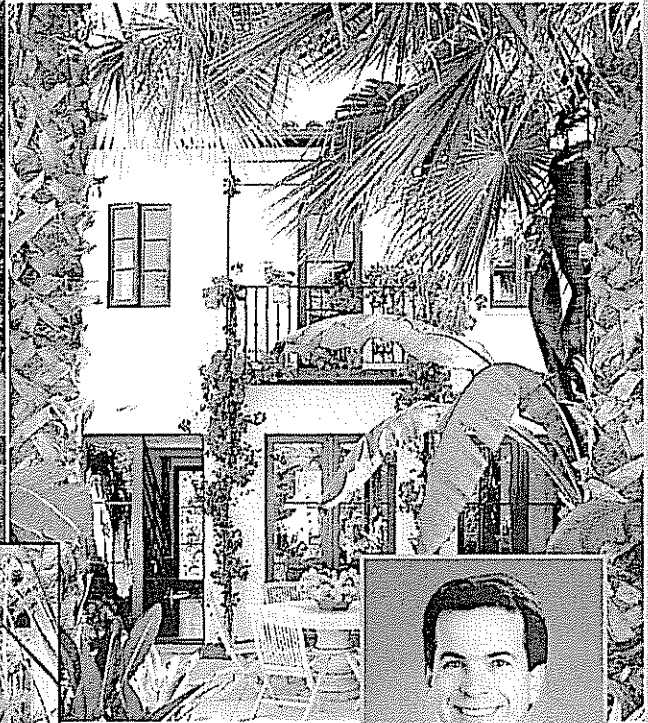


# TIMELESS ELEGANCE, SPANISH COLONIAL CHARM

644 SENECA STREET ■ PALO ALTO



WELCOME to this elegant Spanish Colonial-style home, designed and built in 2001 by internationally renowned hotel and resort architect Robert Glazier. Behind the street façade, three separate structures are linked by enclosed courtyards and extravagantly landscaped gardens. In the main house, mahogany-framed French doors open from every downstairs room, letting in sunlight, color, and fresh air. Two of the three upstairs bedrooms connect to roof terraces overlooking the rear garden. The two-bedroom, one-bath guest house features a fully equipped kitchen, and the detached two-car garage doubles as an artist's studio/study/playroom.

Offered at \$3,749,000



presented by

## HUGH CORNISH



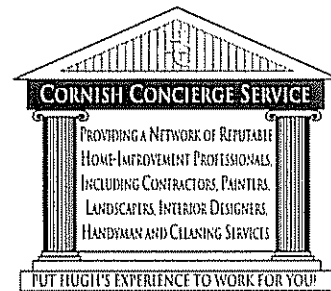
#1 Agent in Menlo Park -  
El Camino Office 2000, 2001,  
2002, 2003, & 2004

International President's Premier  
Top 1% of Coldwell Banker agents

650-566-5353

hcornish@cbnorcal.com

www.hcornish.com



PUT HUGH'S EXPERIENCE TO WORK FOR YOU!

Information deemed reliable, but not guaranteed.

## *644 Seneca Street, Palo Alto*

*Welcome to this elegant Spanish Colonial-style home, designed and built in 2001 by internationally renowned hotel and resort architect Robert Glazier. Behind the street façade, three separate structures are linked by enclosed courtyards and extravagantly landscaped gardens. In the main house, mahogany-framed French doors open from every downstairs room, letting in sunlight, color, and fresh air. Two of the three upstairs bedrooms connect to roof terraces overlooking the rear garden. The two-bedroom, one-bath guest house features a fully-equipped kitchen, and the detached two-car garage doubles as an artist's studio/study/playroom.*

### Summary of Features

- A **courtyard** featuring a tiled fountain forms the approach to the house
- The **living room** is defined by six pairs of mahogany-framed French doors
- The formal **dining room** has built-in wine storage for 200 bottles
- The streamlined **kitchen** has limestone counters and top-of-the-line appliances
- Located off a hall adjoining the living room, the **den** may be used as a bedroom
- The **study** has a view of the secret garden and may also be used as a bedroom
- A downstairs **full bath** situated off the hall between the den and the study
- A freestanding flight of **stairs** ascends to the book-lined upper landing
- Three **bedrooms and two full baths** upstairs include:
  - The **master suite** with a dressing room, luxurious **bath**, and private terrace
  - A second **bedroom** with mahogany windows framing a view of the treetops
  - A third upstairs **bedroom** with a sunny roof terrace and nearby **full bath**
- The stacked washer/dryer are found in a **laundry closet** off the upper landing
- The guest house is separated from the main house by a leafy **secret garden**
- The **two-bedroom, one bath guest house** features a fully-equipped kitchen
- Across the central patio, a courtyard leads to a cutting garden with **raised beds**
- The detached **two-car garage** doubles as an artist's studio/study/playroom
- Flaming bougainvillea swaths the **arbor** which shades the south-facing patio
- A **children's play area** is completely encircled by a seven-foot fence
- In the **rear garden**, the lawn is bordered by fruitless olive trees and cypress
- Handmade terra cotta **roof tiles** were salvaged from a 1920's California estate
- Approximately **3367 square feet of living space**, including garage/studio
- Approximately **8737 square foot lot**, landscaped by Wild West Gardens
- Excellent **Palo Alto schools**

## *Approach*

- The street facade is broken by a massive mahogany door inset into the white stucco wall
- An enclosed **courtyard** forms the approach to the house
- A brilliantly tiled, Talavera fountain reflects three enormous, arching palms
- To the right are the guest house and the secret garden
- To the left, the garage/artist's studio and a courtyard framed by four slender cypress
- Ahead., flaming bougainvillea is supported by a graceful wrought-iron balcony

## *Main House*

### **Living Room**

- The **living room** is defined by six pairs of eight-foot tall French doors, which open to the front courtyard and south-facing patio
- Custom-crafted, the doors are single-paned tempered glass framed in solid, dark mahogany and have Baldwin latches
- Set into one wall, the Rumsford wood-burning fireplace has a 200-year old French limestone mantel and a brick hearth
- Two pairs of paneled double doors flank the fireplace
- Opposite, a sculptural flight of stairs leads to the upper landing
- Two doorways lead to the formal dining room and kitchen
- Stereo speakers are set into the over nine-foot ceiling
- Recessed perimeter pin-spotlights and oak floor stained to match the mahogany doors

### **Dining Room**

- The formal **dining room** doubles as a wine tasting room
- Built-in floor-to-ceiling mahogany bins on either side of the doorway to the kitchen hold nearly 200 bottles
- A pair of French doors opens to the courtyard framed by four slender cypress
- Stereo speakers are set into the over nine-foot ceiling
- Recessed perimeter pin-spotlights and oak floor stained to match the mahogany doors

## **Kitchen**

- The streamlined **kitchen** is lined in dark stained mahogany cabinets and drawers
- The counters and center island are topped with creamy French limestone
- On the far side of the center island, the breakfast bar seats four people
- Behind the breakfast bar, a lighted spice alcove is fitted with glass shelves
- A Gaggenau gas cook top with a grill, a Gaggenau electric oven and a SubZero wine captain are built into the center island
- An extra-deep stainless steel sink faces two pairs of mahogany casement windows
- On either side of the sink are a built-in Built-in Miele coffeemaker and a Miele steam oven, each flanked by two appliance garages
- Additional state-of-the-art appliances include a GE Monogram refrigerator/freezer and a Miele dishwasher
- Twin pantry storage cupboards have handy pull-out shelves
- A pair of French doors opens to the south-facing patio
- Nearby, a utility closet is concealed behind a flush door
- Stereo speakers are set into the over nine-foot ceiling
- Recessed spotlights and oak floor stained to match the mahogany doors

## **Den**

- Beyond the double doors to the left of the living room fireplace is a hall leading to the **den**
- The den may be used as a bedroom
- The lighted closet has been fitted with mahogany shelves to accommodate media systems
- A pair of French doors opens to the rear patio
- Opposite a second pair of glass doors opens to the children's play area
- Screens on these doors allow fresh air to circulate
- Stereo speakers are set into the nine-foot ceiling
- The oak floor is stained to match the mahogany doors

## **Study**

- Beyond the double doors to the right of the living room fireplace is the **study**
- The study may be used as a bedroom
- The lighted closet has been fitted with mahogany shelves

- A paneled door leads to the hall between the den and the study
- A pair of French doors opens to the leafy secret garden
- Recessed perimeter pin-spotlights and oak floor stained to match the mahogany doors

### Downstairs Bath

- The downstairs **full bath** is located off the hall between the den and the study
- The Kohler sink is set into a creamy limestone counter beneath a wall of mirror
- The limestone stall shower is brightened by a mahogany casement window
- Recessed perimeter pin-spotlights and oak floor stained to match the mahogany doors

### Stairs and Upper Landing

- A sculptural flight of **stairs** is suspended above the living room
- Accented by a handsome wrought-iron banister, the stair ascends to **the upper landing**
- The upper landing is lined with floor-to-ceiling built-in mahogany bookshelves
- A pair of mahogany casement windows frame a view of the courtyard
- Concealed behind a flush mahogany door, is a Miele stacked washer/dryer
- Opposite matching door hides a linen closet
- Recessed perimeter pin-spotlights and oak floor stained to match the mahogany doors

### Master Suite

- The **master suite** incorporates a small anteroom, dressing room, full bath, bedroom and rooftop terrace
- The **anteroom** has a French door that opens to the wrought-iron balcony
- The **dressing room** is lined in built-in floor-to-ceiling wardrobes with flush mahogany doors
- A snug seat is built-in under a pair of mahogany casement windows which frames a view of the front courtyard
- A paneled door opens into the spacious **bedroom**
- Mahogany windows with retractable screens on three sides of the room let in sunlight and fresh air
- A small closet has been fitted with shelves to accommodate media systems
- At the far end of the room, pair of French doors opens to the **rooftop terrace**
- The private terrace overlooks the rear garden

- Sturdy plank decking supports three massive pots planted with fragrant citrus
- Stereo speakers are set into the ceiling
- The oak floor is stained to match the mahogany doors
- The **master bath** is a dream of understated luxury
- Twin sinks are set into a French limestone counter beneath a wall of mirror
- Medicine cabinets with flush doors are built into the walls on either side
- Dark stained mahogany cabinetry adds richness
- Above, a skylight admits natural light
- The whirlpool tub is encased in a limestone deck
- The adjoining space is brightened by a mahogany casement window overlooking the rear garden
- The commode is enclosed in this separate alcove
- Opposite, the oversized steam shower is lined in matching limestone
- Recessed spotlights and creamy French limestone floor

## Second Upstairs Bedroom

- The second **upstairs bedroom** has a view of the treetops
- Two pairs of mahogany casement windows have retractable screens
- The lighted closet provides hanging and shelf storage
- The oak floor is stained to match the windows

## Bath

- The **full bath** is located at the top of the stairs
- The sink is set into a limestone counter beneath a mahogany casement window with a retractable screen
- Medicine cabinets with flush doors are built into the walls on either side
- Dark stained mahogany cabinetry adds richness
- The shower-over-tub has a limestone enclosure and a pull-out nozzle
- Shelves are recessed into the walls above the tub and the commode
- Recessed spotlights and creamy French limestone floor

## Third Upstairs Bedroom

- In the third **upstairs bedroom** a pair of French doors opens to the **rooftop terrace**
- The lighted closet provides hanging and shelf storage
- The floor is stained to match the mahogany doors

## *Guest House*

- The **two-bedroom, one bath guest house** is separated from the main house by a leafy **secret garden**
- This enchanting house has its own address (640 Seneca Street) and its own utility meters
- In the main room, a pair of French doors open to the front courtyard
- The pocket **kitchen** has dark stained mahogany cabinets and drawers topped with creamy French limestone counters
- Appliances include a two-burner Gaggenau gas cook top, a small Gaggenau electric oven, a Miele dishwasher and a SubZero refrigerator
- An extra-deep stainless steel sink faces a pair of mahogany casement windows with a retractable screen
- Concealed behind a flush door, is a Kenmore stacked washer/dryer
- Recessed perimeter pin-spotlights and oak floor stained to match the mahogany doors
- In each of the two **bedrooms** a pair of French doors opens to the side walkway and closets provide hanging and shelf storage
- The **full bath** is located off the main room
- The shower-over-tub has a limestone enclosure and a pull-out nozzle
- The Kohler sink is set into a creamy limestone counter beneath a mahogany casement window with a retractable screen

## *Garage/Studio*

- The detached **two-car garage** doubles as an **artist's studio/study/playroom**
- Two large cabinets are built into the far wall on either side of a computer desk
- The right closet features a sink
- A pair of French doors opens to the front courtyard
- A second pair of French doors leads to the courtyard anchored by four slender cypress
- One wall is covered in a tackable surface
- Above, a skylight admits natural light
- One of the garage doors may be opened to allow a car to park
- The second garage door would be operable if the built-in cabinets were to be removed
- Recessed spotlights and practical linoleum tile floor



## ***Patios and Gardens***

- The street facade is broken by a massive mahogany **security door** inset into the white stucco wall
- Vigorous rosemary, French lavender and fruitless olive trees screen the front of the property
- An enclosed **courtyard** forms the approach to the house
- A brilliantly tiled, Talavera **fountain** reflects three enormous, arching palms and bird of paradise
- Flaming red bougainvillea is supported by a graceful **wrought-iron balcony**
- A leafy secret garden is paved with irregular limestone stepping stones
- The **courtyard** between the garage and the dining room is anchored by four slender cypress
- The courtyard leads to a graveled cutting garden with two charming birdbaths and four **raised herb beds**
- On the other side of the house, a **children's play area** is completely encircled by a seven-foot fence with gates leading to the secret garden and the rear garden
- In the **rear garden**, the seventy foot-long, oval lawn is bordered by fruitless olive trees and towering cypress
- Flaming red bougainvillea swaths the **arbor** which shades the south-facing patio

## ***Additional Features***

- Doors and windows are custom-crafted by Brothers Windows and Doors of solid mahogany
- Door and window latches are by Baldwin
- Kitchen and bath chrome fixtures are from Kroin
- Central forced air; two heating zones in the main house and one zone each in the guest house and garage
- Stereo speakers in all principal downstairs rooms except for the study
- Stereo speakers in the master bedroom
- Surround sound in the den
- DSL and category 5 wiring
- Patch panel for all phones and DSL
- Security alarm system in the main house and in the guest house



- Handmade terra cotta **roof tiles** were salvaged from a 1920's California estate
- Automatic sprinklers front and rear
- Approximately **3367 square feet of living space** (including garage/studio) designed and built by internationally renowned architect Robert Glazier of Hill Glazier Architects, Palo Alto
- Approximately **409 square foot garage, plus a 539 square foot guest house**
- Approximately **8737 square foot lot**, beautifully landscaped by Andrew Glazier of Wild West Gardens, Livermore
- Excellent Palo Alto schools

**Note:** The stone dining table on the front patio, the statue of Buddha in the secret garden, the plasma television in the den, and the (unwired) chandeliers in the dining room and rear patio are excluded from the sale of the property. No planter tubs, pots, urns or jars are included in the sale of the property.

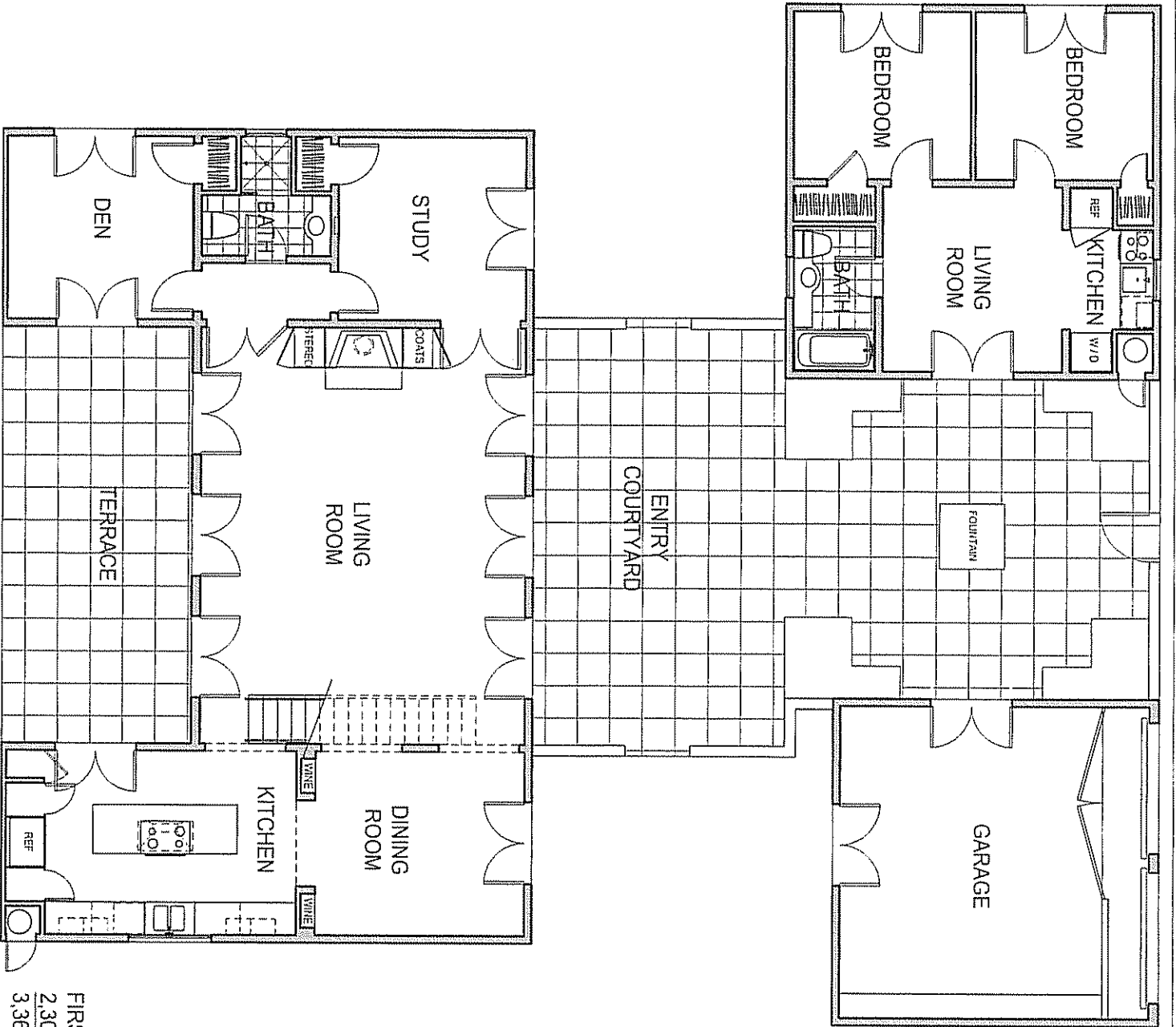
Disclosure Package Available Upon Request

*For Further Information Please Contact*

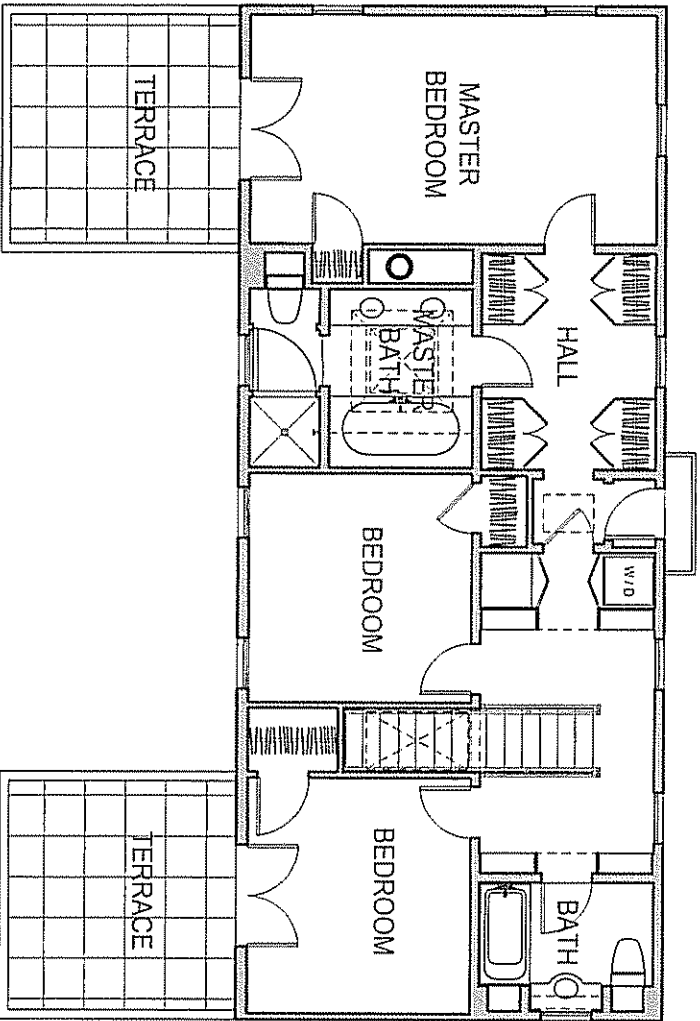
***Hugh D. Cornish***  
*International President's Premier*  
*Coldwell Banker Residential Real Estate*

*Bus: (650) 324-4456    Fax: (650) 324-8934    VM: (650) 566-5353*

*Any statistics or prices while not guaranteed,  
have been secured from sources we believe to be reliable*



FIRST FLOOR PLAN  
 2,302 SF  
 3,367 SF TOTAL



SECOND FLOOR PLAN  
 1,065 SF  
 3,367 SF TOTAL