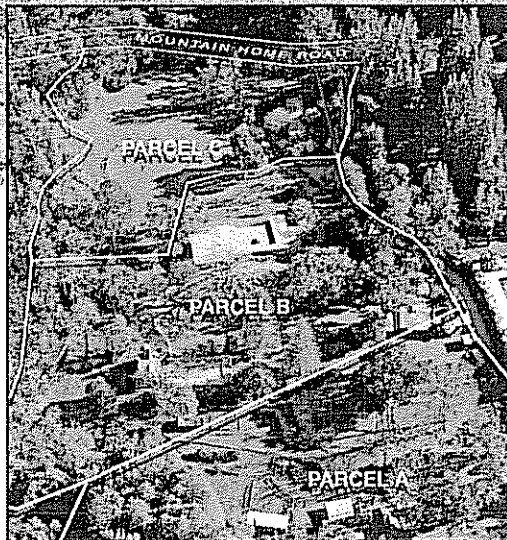


**WOODSIDE WONDERLAND 240 MOUNTAIN HOME ROAD ■ WOODSIDE**



presented by

**HUGH  
CORNISH**



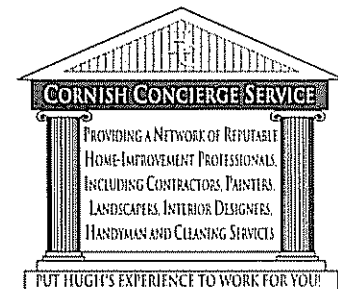
#1 Agent in Menlo Park –  
El Camino Office 2000, 2001,  
2002, 2003, & 2004

International President's Premier  
Top 1% of Coldwell Banker agents

**650-566-5353**

[hcornish@cbnorcal.com](mailto:hcornish@cbnorcal.com)

[www.hcornish.com](http://www.hcornish.com)



Information deemed reliable, but not guaranteed.

WELCOME to this magical, nine-plus-acre property, close to the center of Woodside, yet lost in time. Wander down to the rustic barn, past the green paddocks of long ago. Stop at the bridge that spans the creek and dream of summer picnics in the redwood grove. Rest in the shade of an ancient oak and breathe in the view, or sun yourself on the crown of the hill, close your eyes, and imagine the possibilities ...

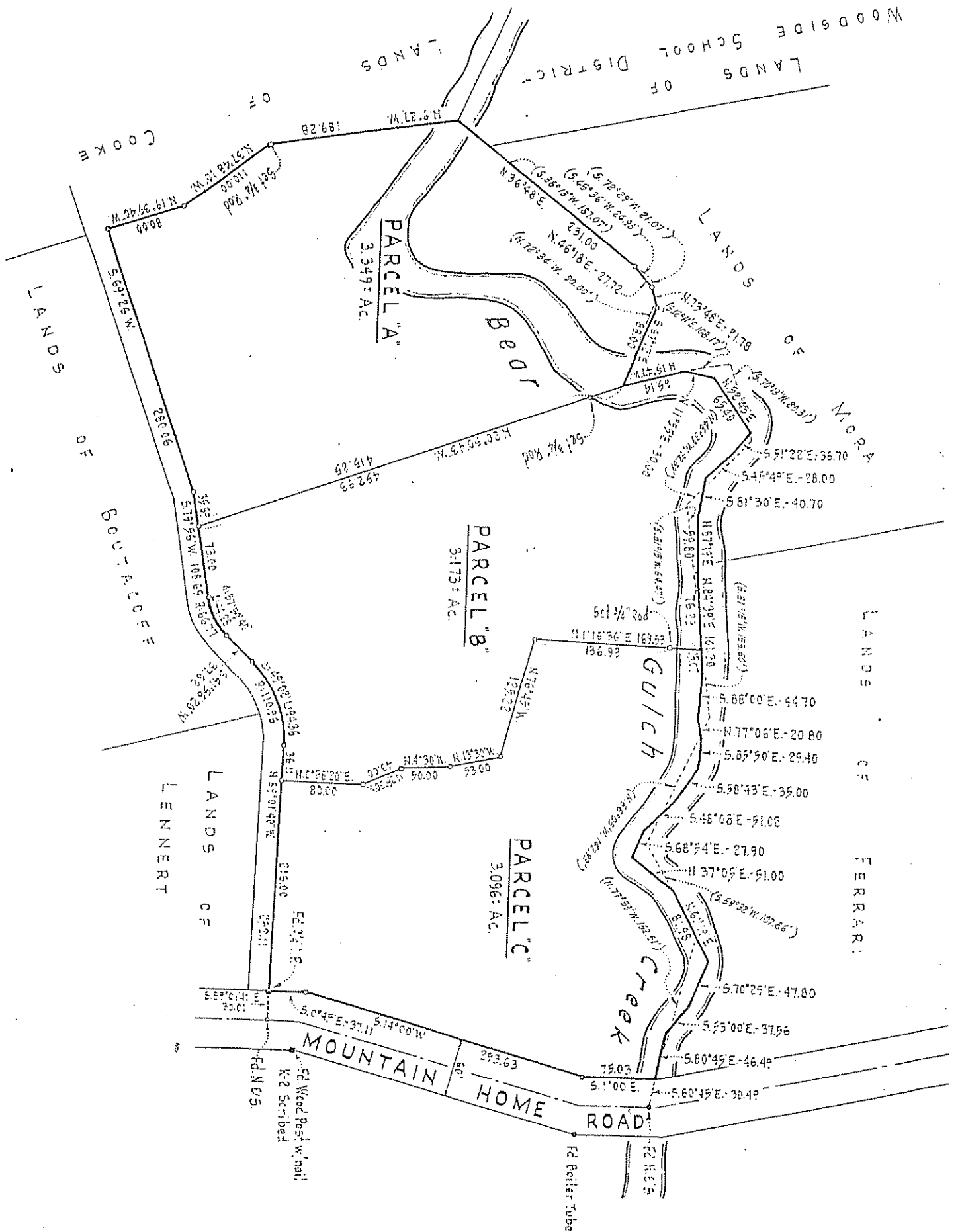
A once in a lifetime opportunity, the unspoiled loveliness of this historic estate will cling to your senses and pervade your soul.

Parcel A	APN # 072 190 650	approximately 3.35 acres
Parcel B	APN # 072 190 920	approximately 3.17 acres
Parcel C	APN # 072 190 660	approximately 3.10 acres

NOTE: Several original structures exist on the property, including a four-bedroom main house, a caretaker's cottage and a swimming pool with a pool house. There is also a barn with tack room and paddocks. The property in its entirety is being sold "As Is" without warranty.

Disclosure Package Available Upon Request

**Offered at \$10,995,000**





LANDS OF  
WOODSIDE SCHOOL  
DISTRICT

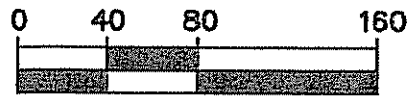
PARCEL  
"B"

PARCEL "A"  
VOLUME 6 PAGE 60  
145,863 SQ.FT.  
3.35 ACRES

LANDS OF  
COOKE

**LEGEND**

- SET 2"x2" WOOD HUB
- SET 1/2" REBAR WITH CAP, LS 7623
- ⊖ SET BRASS TAG AND NAIL, LS 7623
- ⊙ FOUND 3/4" IRON PIPE



**SCALE: 1" = 80'**



**LEA & SUNG ENGINEERING, INC.**

CIVIL ENGINEERS • LAND SURVEYORS

2495 INDUSTRIAL PARKWAY WEST  
HAYWARD, CALIFORNIA 94545  
(510) 887-4086  
FAX (510) 887-3019

**BOUNDARY SURVEY**  
240 MOUNTAIN HOME RD.  
WOODSIDE, CALIFORNIA  
SAN MATEO COUNTY

APN: 072-190-650

NOVEMBER 2004

DRAWN BY: MF

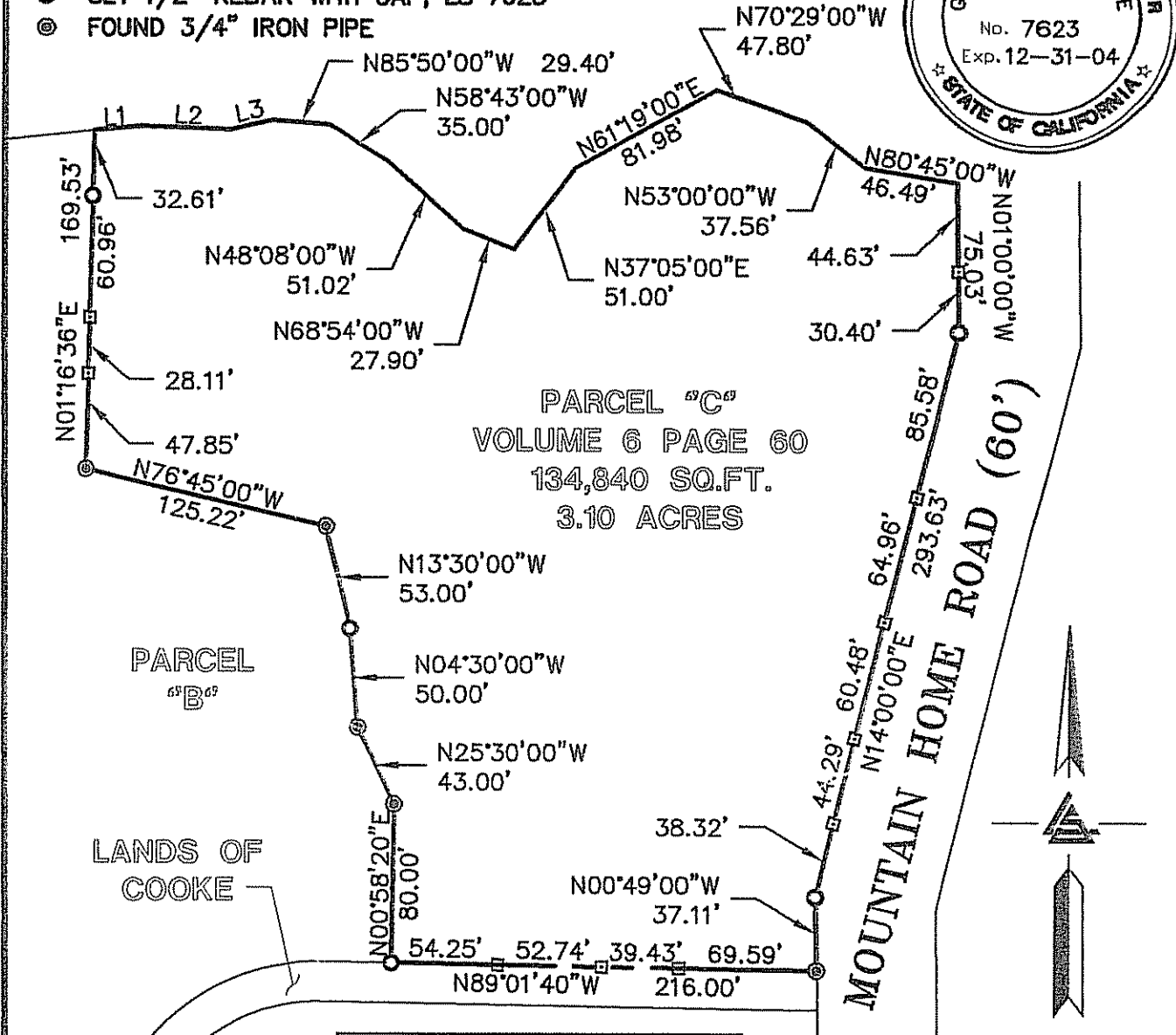
JOB NO. 2040845



**LEGEND**

- ▣ SET 2"x2" WOOD HUB
- SET 1/2" REBAR WITH CAP, LS 7623
- ⊙ FOUND 3/4" IRON PIPE

LANDS OF  
FERRARI

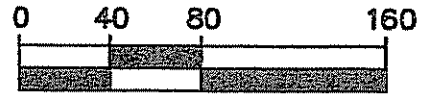


PARCEL "C"  
VOLUME 6 PAGE 60  
134,840 SQ.FT.  
3.10 ACRES

PARCEL  
"B"

LANDS OF  
COOKE

LINE TABLE		
LINE	BEARING	LENGTH
L1	N84°39'00"E	25.07'
L2	N88°00'00"W	44.70'
L3	N77°06'00"E	20.80'



**SCALE: 1" = 80'**



**LEA & SUNG ENGINEERING, INC.**

CIVIL ENGINEERS • LAND SURVEYORS

2495 INDUSTRIAL PARKWAY WEST  
HAYWARD, CALIFORNIA 94545  
(510) 887-4085  
FAX (510) 887-3010

**BOUNDARY SURVEY**  
**240 MOUNTAIN HOME RD.**  
**WOODSIDE, CALIFORNIA**  
**SAN MATEO COUNTY**

APN: 072-190-660

NOVEMBER 2004

DRAWN BY: MF

JOB NO. 2040845