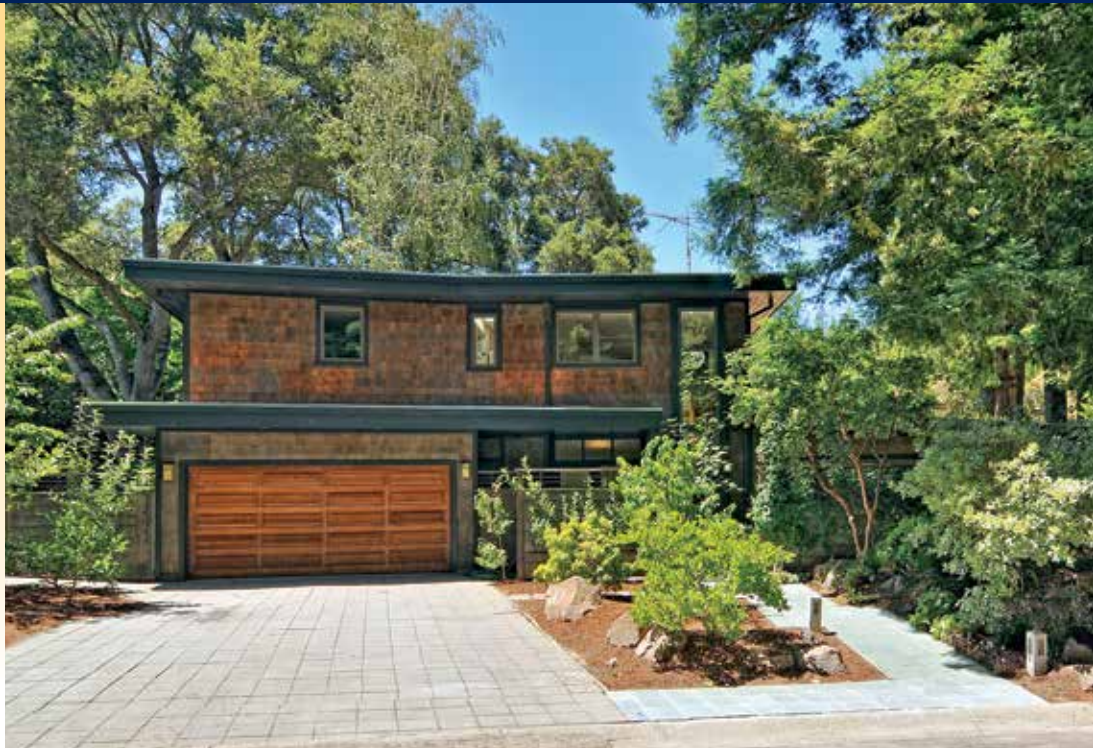


REMODELED CONTEMPORARY HOME IN A PARKLIKE SETTING

Located on a rare circular neighborhood street in central Portola Valley, this beautifully remodeled contemporary home is just minutes from all the amenities of the Town Center. The captivating setting, with magnificent redwoods and forested grounds along the creek, provides quiet solitude and a picture of nature at every turn. Numerous skylights and walls of windows and French doors fill the home with natural light. The two-story floor plan with an open concept is ideal for large gatherings – a spacious family room kitchen, formal dining room, an expansive office, plus an upstairs recreation room ideal for play. There are 4 bedrooms, comprising a master retreat amid the trees and a private guest bedroom, both on the main level, plus two upstairs bedrooms. Outside, the low-maintenance grounds offer a sun-swept deck, soothing spa, and the gentle sounds of a water feature fountain – a serene escape from the fast pace of Silicon Valley.



135 WYNDHAM DRIVE, PORTOLA VALLEY

- Sought-after location on a rare neighborhood circle in Central Portola Valley
- Beautiful creekside wooded setting with majestic redwoods and mature oak trees
- Two-story contemporary home with 4 bedrooms, office, and 3.5 bathrooms
- Approximately 4,080 square feet
- Main level with living room, family room kitchen, formal dining room, office or bonus room, bedroom, and master suite
- Hardwood floors, recessed lighting, numerous skylights, picture windows, and French doors
- Two bedrooms, bath and recreation room on the upper level
- Attached 2-car garage of approximately 405 square feet
- Wooded creekside setting with sun-swept deck, water feature with fountain, and built-in spa
- Over one-third acre (approximately 16,500 square feet)
- Great location close to Portola Valley Town Center, walking trails, and bus stop
- Top-rated Portola Valley schools

www.135Wyndham.com

Price upon request

Top 1% Internationally – Coldwell Banker

Ranked #131 Nationally by *The Wall Street Journal*, 2016

Over \$1.8 Billion in Sales

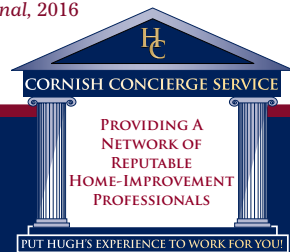
**HUGH
CORNISH**

www.HUGHcornish.com

650.566.5353
hcornish@cbnorcal.com

CalBRE# 00912143

This information was supplied by Seller and/or other sources. Broker believes this information to be correct but has not verified this information and assumes no legal responsibility for its accuracy. Buyers should investigate these issues to their own satisfaction. Information deemed reliable, but not guaranteed. If your home is currently listed for sale, this is not a solicitation of that listing. Photography by Cherie Cordellos. ©Marketing Designs, Inc. 650.802.0888/marketingdesigns.net



135 Wyndham Drive, Portola Valley

Public Rooms

Foyer

A skylit covered courtyard shelters the front entrance where a wall of translucent rain glass panels integrates the front door, matching sidelight, and transom; slate tiles finish the courtyard and continue into the foyer

Living Room

Open to the foyer and family room kitchen, this spacious central room overlooks the natural beauty of the wooded creekside setting through double French doors flanked by a series of tall windows; hardwood finishes the floor and continues throughout most of the home

Office

Double French doors in the living room open to an expansive office, which has three large side-by-side windows overlooking the rear grounds, crown moldings, and a closet outfitted with shelves

Family Room

A partial wall separates the living room from the family room and integrates custom cabinetry designed for media needs; a fireplace with gas starter is surrounded in ceramic tiles topped with a wooden mantel; picture windows wrap around two walls next to a French door opening to the rear deck; three skylights provide added natural light

Kitchen

Fully open to the family room and finished with beautiful custom cabinetry, the chef's kitchen includes a large island with elevated breakfast bar beneath pendant lights, a desk center, double stainless sink with instant hot water and filtered water, bar sink, and appliance garage lined with electrical outlets; honed granite slab counters coordinate with backsplashes of mosaic tiles; two skylights, picture window above the sink, and French door to the rear deck

Appliances

Thermador gas range with oven, second Thermador oven, Bosch dishwasher, and LG refrigerator

Formal Dining Room

The formal dining room is brightened by two skylights, two square windows, and an entire wall of French doors and matching windows to the rear deck for al fresco dining

Recreation Room (upper level)

A wooden staircase with three large picture windows leads to the recreation room featuring a fireplace outlined in slate next to custom cabinetry designed for media needs; an alcove, perfect for a music area, includes a wet bar with added cabinetry and is brightened by a front window plus the skylight and two-story window in the adjacent staircase

Personal Accommodations

Master Bedroom Suite

A skylit entrance opens a tranquil setting overlooking the wooded grounds through a wall of floor-to-ceiling windows plus side windows and a French door to the spa deck; comfortable reading nook; built-in mirrored wardrobe closets span one wall, plus there is a customized walk-in closet with skylight; the tiled, skylit bathroom has a dual-sink vanity, deep tub, shower, and separate room with commode and small sink

Bedroom and Bath

A carpeted bedroom in its own wing has a double-door closet plus generous storage closet and garden-view window; a full bath in the hallway has a granite-topped vanity, slate tile floor, and tub with overhead shower, skylight, and partial glass enclosure

Upper-Level Bedrooms

The wooden staircase with three large picture windows leads to two bedrooms, each with sizable organized closet with double doors, recessed lights, and French door opening to slate tiled private balcony with staircase to the rear grounds

Upper-Level Bathroom

Finished in a colorful pattern of ceramic tiles including wainscot, a skylit bathroom features a dual-sink vanity surrounded by spacious built-in cabinets plus tub with overhead shower with partial glass enclosure

Other Features

- Formal powder room with mosaic tiled vanity
- Double-sized front coat closet
- Tankless hot water heater
- Two high-efficiency furnaces plus electric heat in office
- CAT5 wiring with home run cable access in main-level bedroom closet
- Built-in speakers and volume control in living room, family room kitchen, dining room, master bedroom, master bath, and recreation room
- Mudroom with French door to the front courtyard
- Laundry room with ample cabinetry, Kenmore washer and dryer, sink, and slate tile floor
- Significant storage throughout the home
- Attached 2-car garage with automatic door
- Large storage shed of approximately 165 square feet
- Trex rear decks, low-maintenance landscaping, water feature with fountain, and built-in hot tub spa
- Automatic sprinkler system and low voltage lighting system in front and rear yards
- Acclaimed Portola Valley schools

Disclosure Package Available Upon Request

Listed by Hugh Cornish. Any statistics or prices while not guaranteed have been secured from sources I believe to be reliable. I recommend that the buyer have a licensed contractor inspect the property and review any and all the available reports, building permits and disclosures. In addition, I recommend that if the buyer plans to remodel, tear down and /or re-build the subject property, the buyer should meet with the Town of Portola Valley Building Department. Buyer shall verify square footage of lot and all structures. Buyer shall verify attendance at local schools.